

DEAL POST TEST 2019-20 - SCHOOL REPORT CARD

KARAIKAL
DIS Z2

34040601505 **GPS - NERAVY KOVILPATHU**

All Grades represent the following scorings in % *

GRADE A - >75	* School Status Grade represents the total enrollment of the school (Not %)
GRADE B - 51 TO 75	
GRADE C - 26 TO 50	
GRADE D - 10 TO 25	
GRADE E - <10	

Note: The Values given in the brackets denote the difference between the Pre and Post Test Scores.
(For Example: If the Pre-Test Grade is 'C' and the Post-Test Grade is 'A', then the progress is +2)

SCHOOL GRADE - DB

Status Gr. D (0) Performance Gr. B (0)

OVERALL PERFORMANCE GRADES

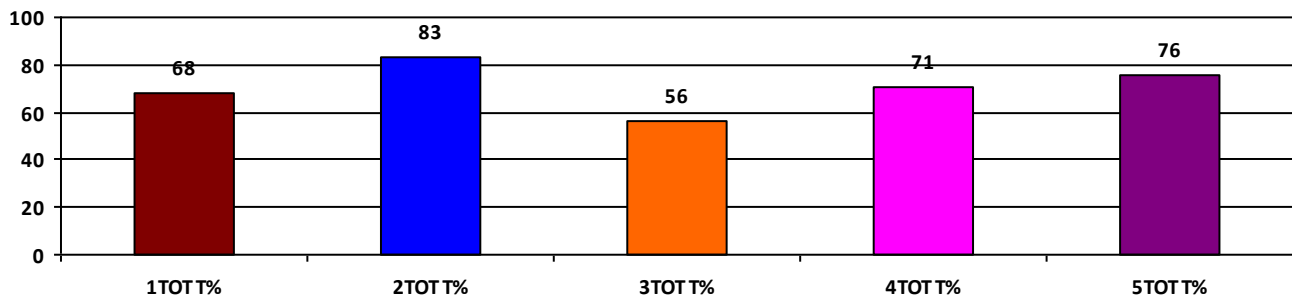
	Boys	Girls	Total
SCHOOL GR.	B	A	B
Diff. to Pre-Test	(0)	(+1)	(0)
DIST. GR.	B	B	B
STATE GR.	B	B	B

CLASSWISE APPEARED

DETAILS	I STD	II STD	III STD	IV STD	V STD
BOYS	3	4	2	3	4
GIRLS	1	2	1	1	2
TOTAL	4	6	3	4	6
Diff. to Pre-Test	(0)	(0)	(-1)	(0)	(0)

CLASSWISE PERFORMANCE GRADES (% of marks)

DETAILS	I STD	II STD	III STD	IV STD	V STD
%	68	83	56	71	76
SCHOOL GR.	B	A	B	B	A
Diff. to Pre-Test	(0)	(+1)	(0)	(0)	(+1)
DIST. GR.	B	B	B	B	B
STATE GR.	A	B	B	B	B



GRADEWISE PERFORMANCE (NO. OF STUDENTS)

ENGLISH	1 Std	2 Std	3 Std	4 Std	5 Std	TAMIL	1 Std	2 Std	3 Std	4 Std	5 Std
GR. A	2	5	1	2	4	GR. A	2	5	1	3	3
GR. B	1	1	0	1	2	GR. B	1	1	0	1	2
GR. C	0	0	2	1	0	GR. C	1	0	2	0	1
GR. D	1	0	0	0	0	GR. D	0	0	0	0	0
GR. E	0	0	0	0	0	GR. E	0	0	0	0	0

DEAL POST TEST 2019-20 - SCHOOL REPORT CARD

KARAIKAL
DIS Z2

34040603403 **GPS - KARUKALACHERRY**

All Grades represent the following scorings in % *

GRADE A - >75	* School Status Grade represents the total enrollment of the school (Not %)
GRADE B - 51 TO 75	
GRADE C - 26 TO 50	
GRADE D - 10 TO 25	
GRADE E - <10	

Note: The Values given in the brackets denote the difference between the Pre and Post Test Scores.
(For Example: If the Pre-Test Grade is 'C' and the Post-Test Grade is 'A', then the progress is +2)

SCHOOL GRADE - DB

Status Gr. D (0) Performance Gr. B (0)

OVERALL PERFORMANCE GRADES

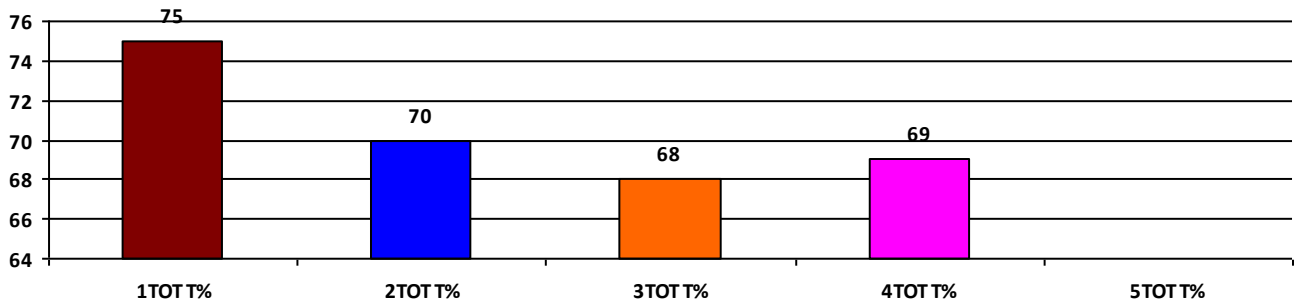
	Boys	Girls	Total
SCHOOL GR.	B	B	B
Diff. to Pre-Test	(0)	(0)	(0)
DIST. GR.	B	B	B
STATE GR.	B	B	B

CLASSWISE APPEARED

DETAILS	I STD	II STD	III STD	IV STD	V STD
BOYS	1	1	1	3	0
GIRLS	0	2	1	1	0
TOTAL	1	3	2	4	0
Diff. to Pre-Test	(0)	(0)	(0)	(0)	(0)

CLASSWISE PERFORMANCE GRADES (% of marks)

DETAILS	I STD	II STD	III STD	IV STD	V STD
%	75	70	68	69	NA
SCHOOL GR.	B	B	B	B	NA
Diff. to Pre-Test	(0)	(0)	(+1)	(0)	(+8)
DIST. GR.	B	B	B	B	B
STATE GR.	A	B	B	B	B



GRADEWISE PERFORMANCE (NO. OF STUDENTS)

ENGLISH	1 Std	2 Std	3 Std	4 Std	5 Std	TAMIL	1 Std	2 Std	3 Std	4 Std	5 Std
GR. A	0	1	0	0	0	GR. A	0	1	1	3	0
GR. B	1	2	2	3	0	GR. B	1	1	1	1	0
GR. C	0	0	0	1	0	GR. C	0	1	0	0	0
GR. D	0	0	0	0	0	GR. D	0	0	0	0	0
GR. E	0	0	0	0	0	GR. E	0	0	0	0	0

DEAL POST TEST 2019-20 - SCHOOL REPORT CARD

KARAIKAL
DIS Z2

34040603404 GPS - NADUKALAMPET

All Grades represent the following scorings in % *

GRADE A - >75	* School Status Grade represents the total enrollment of the school (Not %)
GRADE B - 51 TO 75	
GRADE C - 26 TO 50	
GRADE D - 10 TO 25	
GRADE E - <10	

Note: The Values given in the brackets denote the difference between the Pre and Post Test Scores.
(For Example: If the Pre-Test Grade is 'C' and the Post-Test Grade is 'A', then the progress is +2)

SCHOOL GRADE - DA

Status Gr. D (0) Performance Gr. A(+2)

OVERALL PERFORMANCE GRADES

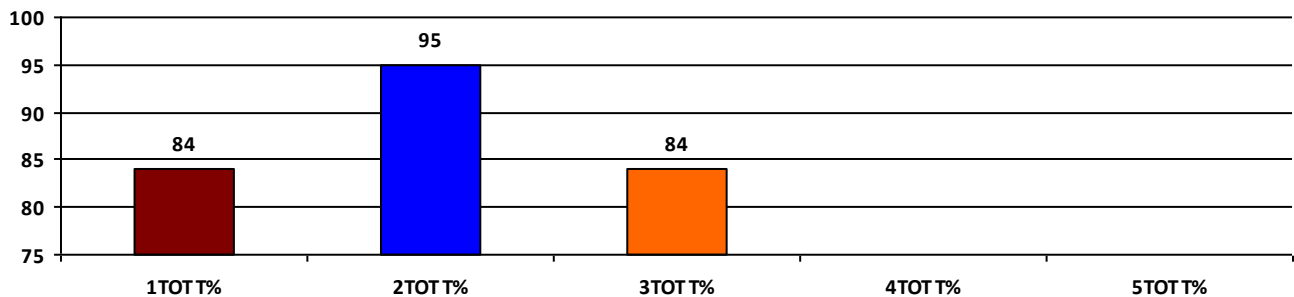
	Boys	Girls	Total
SCHOOL GR.	A	A	A
Diff. to Pre-Test	(+2)	(+1)	(+2)
DIST. GR.	B	B	B
STATE GR.	B	B	B

CLASSWISE APPEARED

DETAILS	I STD	II STD	III STD	IV STD	V STD
BOYS	0	1	1	0	0
GIRLS	3	3	4	0	0
TOTAL	3	4	5	0	0
Diff. to Pre-Test	(-1)	(-5)	(0)	(0)	(0)

CLASSWISE PERFORMANCE GRADES (% of marks)

DETAILS	I STD	II STD	III STD	IV STD	V STD
%	84	95	84	NA	NA
SCHOOL GR.	A	A	A	NA	NA
Diff. to Pre-Test	(+1)	(+2)	(+1)	(+8)	(+8)
DIST. GR.	B	B	B	B	B
STATE GR.	A	B	B	B	B



GRADEWISE PERFORMANCE (NO. OF STUDENTS)

ENGLISH	1 Std	2 Std	3 Std	4 Std	5 Std	TAMIL	1 Std	2 Std	3 Std	4 Std	5 Std
GR. A	3	4	3	0	0	GR. A	3	4	4	0	0
GR. B	0	0	2	0	0	GR. B	0	0	1	0	0
GR. C	0	0	0	0	0	GR. C	0	0	0	0	0
GR. D	0	0	0	0	0	GR. D	0	0	0	0	0
GR. E	0	0	0	0	0	GR. E	0	0	0	0	0

DEAL POST TEST 2019-20 - SCHOOL REPORT CARD

KARAIKAL
DIS Z2

34040604001 **GPS - K.PATTINACHERRY**

All Grades represent the following scorings in % *

GRADE A - >75	
GRADE B - 51 TO 75	* School Status Grade
GRADE C - 26 TO 50	represents the total
GRADE D - 10 TO 25	enrollment of the
GRADE E - <10	school (Not %)

Note: The Values given in the brackets denote the difference between the Pre and Post Test Scores.
(For Example: If the Pre-Test Grade is 'C' and the Post-Test Grade is 'A', then the progress is +2)

SCHOOL GRADE - AB

Status Gr. A (0) Performance Gr. B(+1)

OVERALL PERFORMANCE GRADES

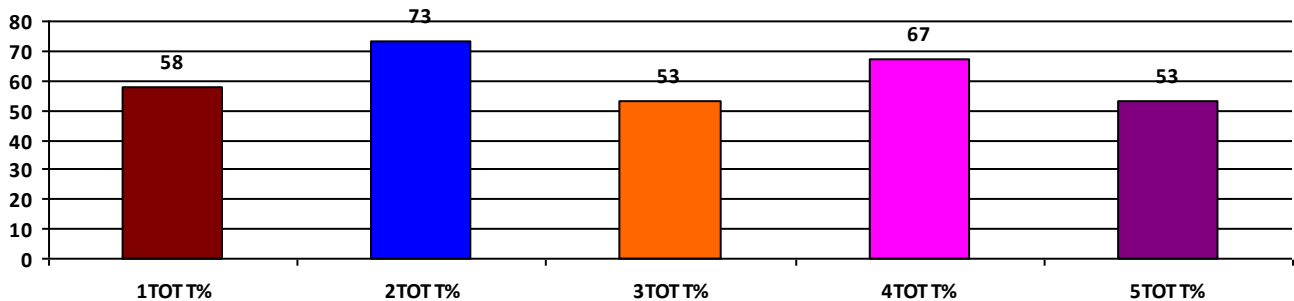
	Boys	Girls	Total
SCHOOL GR.	B	B	B
Diff. to Pre-Test	(+1)	(+1)	(+1)
DIST. GR.	B	B	B
STATE GR.	B	B	B

CLASSWISE APPEARED

DETAILS	I STD	II STD	III STD	IV STD	V STD
BOYS	12	11	9	10	10
GIRLS	5	7	5	7	14
TOTAL	17	18	14	17	24
Diff. to Pre-Test	(+1)	(0)	(0)	(-2)	(-1)

CLASSWISE PERFORMANCE GRADES (% of marks)

DETAILS	I STD	II STD	III STD	IV STD	V STD
%	58	73	53	67	53
SCHOOL GR.	B	B	B	B	B
Diff. to Pre-Test	(0)	(+1)	(+1)	(+1)	(+1)
DIST. GR.	B	B	B	B	B
STATE GR.	A	B	B	B	B



GRADEWISE PERFORMANCE (NO. OF STUDENTS)

ENGLISH	1 Std	2 Std	3 Std	4 Std	5 Std	TAMIL	1 Std	2 Std	3 Std	4 Std	5 Std
GR. A	6	11	2	4	5	GR. A	1	9	7	12	4
GR. B	7	3	3	10	9	GR. B	7	4	3	3	13
GR. C	3	4	4	1	5	GR. C	7	4	2	0	1
GR. D	0	0	4	1	4	GR. D	1	1	1	1	3
GR. E	1	0	1	1	1	GR. E	1	0	1	1	3

DEAL POST TEST 2019-20 - SCHOOL REPORT CARD

KARAIKAL
DIS Z2

34040604102 **GPS - KEEZHAIYUR**

All Grades represent the following scorings in % *

GRADE A - >75	
GRADE B - 51 TO 75	* School Status Grade
GRADE C - 26 TO 50	represents the total
GRADE D - 10 TO 25	enrollment of the
GRADE E - <10	school (Not %)

Note: The Values given in the brackets denote the difference between the Pre and Post Test Scores.
(For Example: If the Pre-Test Grade is 'C' and the Post-Test Grade is 'A', then the progress is +2)

SCHOOL GRADE - BB

Status Gr. B (0) Performance Gr. B(+1)

OVERALL PERFORMANCE GRADES

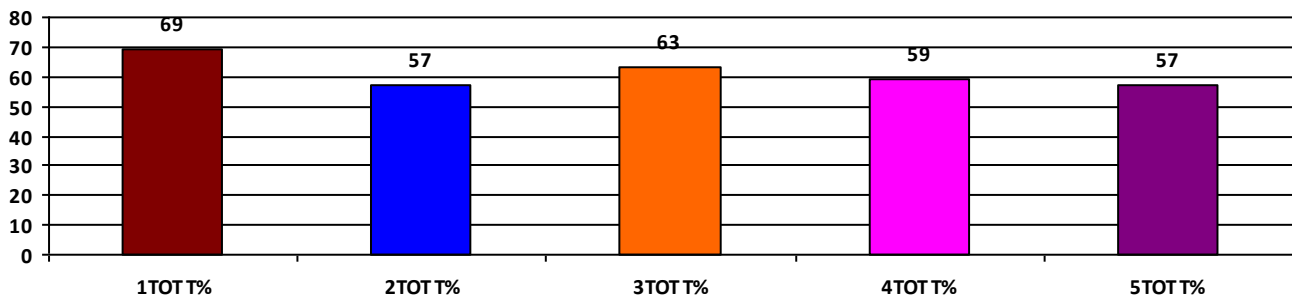
	Boys	Girls	Total
SCHOOL GR.	B	B	B
Diff. to Pre-Test	(+1)	(+1)	(+1)
DIST. GR.	B	B	B
STATE GR.	B	B	B

CLASSWISE APPEARED

DETAILS	I STD	II STD	III STD	IV STD	V STD
BOYS	7	6	2	7	2
GIRLS	6	9	3	3	10
TOTAL	13	15	5	10	12
Diff. to Pre-Test	(+1)	(-2)	(0)	(+1)	(+3)

CLASSWISE PERFORMANCE GRADES (% of marks)

DETAILS	I STD	II STD	III STD	IV STD	V STD
%	69	57	63	59	57
SCHOOL GR.	B	B	B	B	B
Diff. to Pre-Test	(+1)	(+1)	(0)	(+1)	(0)
DIST. GR.	B	B	B	B	B
STATE GR.	A	B	B	B	B



GRADEWISE PERFORMANCE (NO. OF STUDENTS)

ENGLISH	1 Std	2 Std	3 Std	4 Std	5 Std	TAMIL	1 Std	2 Std	3 Std	4 Std	5 Std
GR. A	4	1	0	0	3	GR. A	7	6	4	5	5
GR. B	6	7	2	3	2	GR. B	5	3	1	3	4
GR. C	1	7	3	7	4	GR. C	1	6	0	2	1
GR. D	2	0	0	0	3	GR. D	0	0	0	0	2
GR. E	0	0	0	0	0	GR. E	0	0	0	0	0

DEAL POST TEST 2019-20 - SCHOOL REPORT CARD

KARAIKAL
DIS Z2

34040604202 **GPS - KVP KUPPAM**

All Grades represent the following scorings in % *

GRADE A - >75	* School Status Grade represents the total enrollment of the school (Not %)
GRADE B - 51 TO 75	
GRADE C - 26 TO 50	
GRADE D - 10 TO 25	
GRADE E - <10	

Note: The Values given in the brackets denote the difference between the Pre and Post Test Scores.
(For Example: If the Pre-Test Grade is 'C' and the Post-Test Grade is 'A', then the progress is +2)

SCHOOL GRADE - DB

Status Gr. D (0) Performance Gr. B(+1)

OVERALL PERFORMANCE GRADES

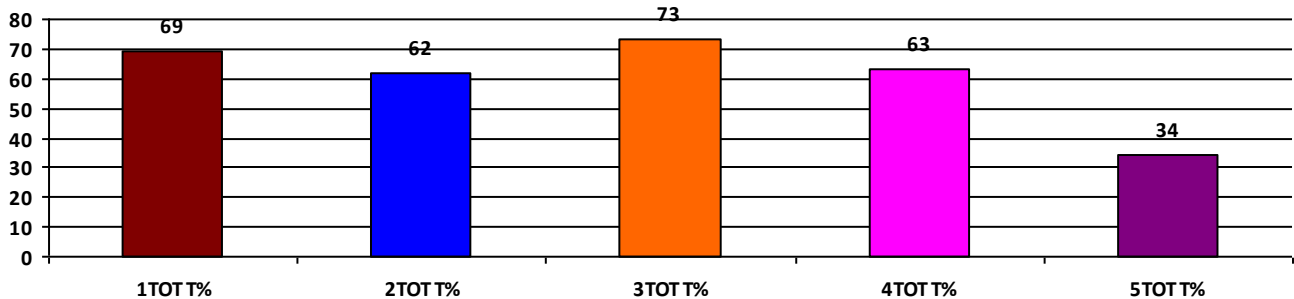
	Boys	Girls	Total
SCHOOL GR.	B	B	B
Diff. to Pre-Test	(+1)	(+1)	(+1)
DIST. GR.	B	B	B
STATE GR.	B	B	B

CLASSWISE APPEARED

DETAILS	I STD	II STD	III STD	IV STD	V STD
BOYS	2	2	1	4	4
GIRLS	1	2	3	1	1
TOTAL	3	4	4	5	5
Diff. to Pre-Test	(-1)	(0)	(0)	(-1)	(0)

CLASSWISE PERFORMANCE GRADES (% of marks)

DETAILS	I STD	II STD	III STD	IV STD	V STD
%	69	62	73	63	34
SCHOOL GR.	B	B	B	B	C
Diff. to Pre-Test	(0)	(+1)	(+1)	(+1)	(0)
DIST. GR.	B	B	B	B	B
STATE GR.	A	B	B	B	B



GRADEWISE PERFORMANCE (NO. OF STUDENTS)

ENGLISH	1 Std	2 Std	3 Std	4 Std	5 Std	TAMIL	1 Std	2 Std	3 Std	4 Std	5 Std
GR. A	0	1	2	1	0	GR. A	1	0	3	3	1
GR. B	3	3	2	2	1	GR. B	2	2	0	1	1
GR. C	0	0	0	2	1	GR. C	0	2	1	1	0
GR. D	0	0	0	0	1	GR. D	0	0	0	0	3
GR. E	0	0	0	0	2	GR. E	0	0	0	0	0

DEAL POST TEST 2019-20 - SCHOOL REPORT CARD

KARAIKAL
DIS Z2

34040604203 **GPS - MELAVANJORE**

All Grades represent the following scorings in % *

GRADE A - >75	* School Status Grade represents the total enrollment of the school (Not %)
GRADE B - 51 TO 75	
GRADE C - 26 TO 50	
GRADE D - 10 TO 25	
GRADE E - <10	

Note: The Values given in the brackets denote the difference between the Pre and Post Test Scores.
(For Example: If the Pre-Test Grade is 'C' and the Post-Test Grade is 'A', then the progress is +2)

SCHOOL GRADE - AB

Status Gr. A (0) Performance Gr. B(+1)

OVERALL PERFORMANCE GRADES

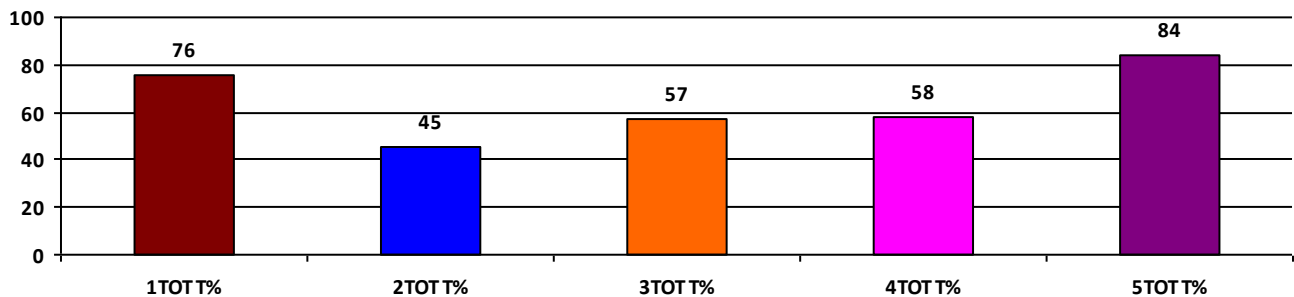
	Boys	Girls	Total
SCHOOL GR.	B	B	B
Diff. to Pre-Test	(+1)	(+1)	(+1)
DIST. GR.	B	B	B
STATE GR.	B	B	B

CLASSWISE APPEARED

DETAILS	I STD	II STD	III STD	IV STD	V STD
BOYS	23	12	17	14	15
GIRLS	15	17	20	15	12
TOTAL	38	29	37	29	27
Diff. to Pre-Test	(-1)	(0)	(-2)	(-1)	(-1)

CLASSWISE PERFORMANCE GRADES (% of marks)

DETAILS	I STD	II STD	III STD	IV STD	V STD
%	76	45	57	58	84
SCHOOL GR.	A	C	B	B	A
Diff. to Pre-Test	(+2)	(0)	(+2)	(+1)	(+1)
DIST. GR.	B	B	B	B	B
STATE GR.	A	B	B	B	B



GRADEWISE PERFORMANCE (NO. OF STUDENTS)

ENGLISH	1 Std	2 Std	3 Std	4 Std	5 Std	TAMIL	1 Std	2 Std	3 Std	4 Std	5 Std
GR. A	18	2	1	5	18	GR. A	30	8	15	11	21
GR. B	13	7	20	6	8	GR. B	5	6	10	12	5
GR. C	6	8	14	16	1	GR. C	2	8	10	5	1
GR. D	0	7	2	2	0	GR. D	1	4	2	1	0
GR. E	1	5	0	0	0	GR. E	0	3	0	0	0

DEAL POST TEST 2019-20 - SCHOOL REPORT CARD

KARAIKAL
DIS Z2

34040604402 GPS - POLAGAM

All Grades represent the following scorings in % *

GRADE A - >75	
GRADE B - 51 TO 75	* School Status Grade
GRADE C - 26 TO 50	represents the total
GRADE D - 10 TO 25	enrollment of the
GRADE E - <10	school (Not %)

Note: The Values given in the brackets denote the difference between the Pre and Post Test Scores.
(For Example: If the Pre-Test Grade is 'C' and the Post-Test Grade is 'A', then the progress is +2)

SCHOOL GRADE - AB

Status Gr. A (0)	Performance Gr. B (0)
------------------	-----------------------

OVERALL PERFORMANCE GRADES

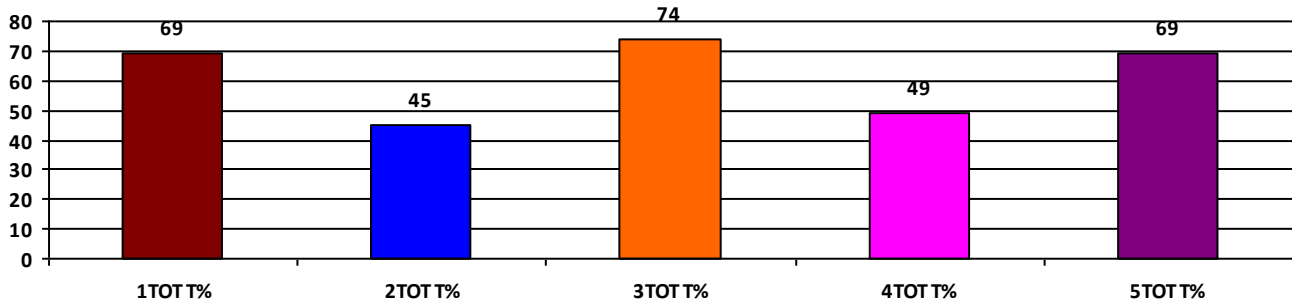
	Boys	Girls	Total
SCHOOL GR.	B	B	B
Diff. to Pre-Test	(+1)	(0)	(0)
DIST. GR.	B	B	B
STATE GR.	B	B	B

CLASSWISE APPEARED

DETAILS	I STD	II STD	III STD	IV STD	V STD
BOYS	9	9	11	14	10
GIRLS	7	13	9	19	13
TOTAL	16	22	20	33	23
Diff. to Pre-Test	(-2)	(+4)	(-1)	(-1)	(+3)

CLASSWISE PERFORMANCE GRADES (% of marks)

DETAILS	I STD	II STD	III STD	IV STD	V STD
%	69	45	74	49	69
SCHOOL GR.	B	C	B	C	B
Diff. to Pre-Test	(0)	(0)	(0)	(0)	(0)
DIST. GR.	B	B	B	B	B
STATE GR.	A	B	B	B	B



GRADEWISE PERFORMANCE (NO. OF STUDENTS)

ENGLISH	1 Std	2 Std	3 Std	4 Std	5 Std	TAMIL	1 Std	2 Std	3 Std	4 Std	5 Std
GR. A	7	1	9	1	6	GR. A	4	5	12	9	15
GR. B	7	5	5	5	10	GR. B	11	3	6	8	1
GR. C	1	12	6	19	7	GR. C	1	8	2	13	6
GR. D	1	2	0	8	0	GR. D	0	4	0	3	1
GR. E	0	2	0	0	0	GR. E	0	2	0	0	0

DEAL POST TEST 2019-20 - SCHOOL REPORT CARD

KARAIKAL
DIS Z2

34040606201 **GPS - VIZHIDIYUR**

All Grades represent the following scorings in % *

GRADE A - >75	* School Status Grade represents the total enrollment of the school (Not %)
GRADE B - 51 TO 75	
GRADE C - 26 TO 50	
GRADE D - 10 TO 25	
GRADE E - <10	

Note: The Values given in the brackets denote the difference between the Pre and Post Test Scores.
(For Example: If the Pre-Test Grade is 'C' and the Post-Test Grade is 'A', then the progress is +2)

SCHOOL GRADE - AB

Status Gr. A (0) Performance Gr. B(+1)

OVERALL PERFORMANCE GRADES

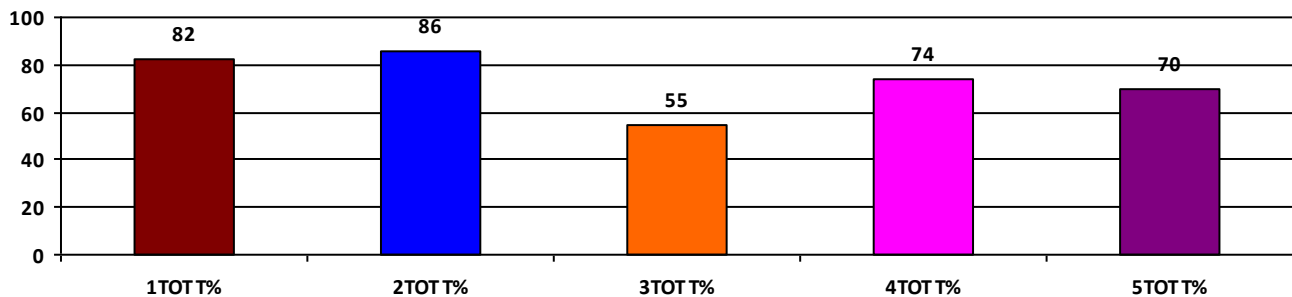
	Boys	Girls	Total
SCHOOL GR.	B	B	B
Diff. to Pre-Test	(+1)	(+1)	(+1)
DIST. GR.	B	B	B
STATE GR.	B	B	B

CLASSWISE APPEARED

DETAILS	I STD	II STD	III STD	IV STD	V STD
BOYS	12	14	15	11	13
GIRLS	7	15	21	22	15
TOTAL	19	29	36	33	28
Diff. to Pre-Test	(-3)	(-6)	(-2)	(-1)	(+3)

CLASSWISE PERFORMANCE GRADES (% of marks)

DETAILS	I STD	II STD	III STD	IV STD	V STD
%	82	86	55	74	70
SCHOOL GR.	A	A	B	B	B
Diff. to Pre-Test	(+1)	(+2)	(+2)	(+1)	(+1)
DIST. GR.	B	B	B	B	B
STATE GR.	A	B	B	B	B



GRADEWISE PERFORMANCE (NO. OF STUDENTS)

ENGLISH	1 Std	2 Std	3 Std	4 Std	5 Std	TAMIL	1 Std	2 Std	3 Std	4 Std	5 Std
GR. A	12	23	2	13	11	GR. A	15	23	10	18	10
GR. B	5	5	16	18	16	GR. B	3	5	15	13	16
GR. C	2	1	15	1	1	GR. C	1	1	9	1	2
GR. D	0	0	2	1	0	GR. D	0	0	1	1	0
GR. E	0	0	1	0	0	GR. E	0	0	1	0	0

DEAL POST TEST 2019-20 - SCHOOL REPORT CARD

KARAIKAL
DIS Z2

34040606204 **GPS - MANAMPET**

All Grades represent the following scorings in % *

GRADE A - >75	
GRADE B - 51 TO 75	* School Status Grade
GRADE C - 26 TO 50	represents the total
GRADE D - 10 TO 25	enrollment of the
GRADE E - <10	school (Not %)

Note: The Values given in the brackets denote the difference between the Pre and Post Test Scores.
(For Example: If the Pre-Test Grade is 'C' and the Post-Test Grade is 'A', then the progress is +2)

SCHOOL GRADE - CA

Status Gr. C (0) Performance Gr. A(+1)

OVERALL PERFORMANCE GRADES

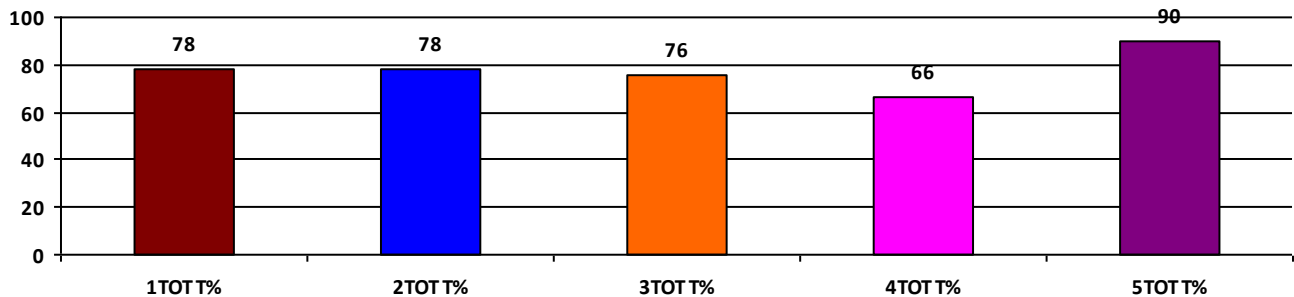
	Boys	Girls	Total
SCHOOL GR.	A	A	A
Diff. to Pre-Test	(+1)	(+1)	(+1)
DIST. GR.	B	B	B
STATE GR.	B	B	B

CLASSWISE APPEARED

DETAILS	I STD	II STD	III STD	IV STD	V STD
BOYS	1	10	2	4	4
GIRLS	0	2	6	2	1
TOTAL	1	12	8	6	5
Diff. to Pre-Test	(-1)	(+1)	(+1)	(0)	(+1)

CLASSWISE PERFORMANCE GRADES (% of marks)

DETAILS	I STD	II STD	III STD	IV STD	V STD
%	78	78	76	66	90
SCHOOL GR.	A	A	A	B	A
Diff. to Pre-Test	(0)	(+1)	(+1)	(0)	(0)
DIST. GR.	B	B	B	B	B
STATE GR.	A	B	B	B	B



GRADEWISE PERFORMANCE (NO. OF STUDENTS)

ENGLISH	1 Std	2 Std	3 Std	4 Std	5 Std	TAMIL	1 Std	2 Std	3 Std	4 Std	5 Std
GR. A	0	5	1	1	5	GR. A	1	7	8	4	4
GR. B	1	7	6	2	0	GR. B	0	5	0	1	1
GR. C	0	0	1	3	0	GR. C	0	0	0	1	0
GR. D	0	0	0	0	0	GR. D	0	0	0	0	0
GR. E	0	0	0	0	0	GR. E	0	0	0	0	0

DEAL POST TEST 2019-20 - SCHOOL REPORT CARD

KARAIKAL
DIS Z2

34040606401 GPS - MELA ODUTHURAI

All Grades represent the following scorings in % *

GRADE A - >75	* School Status Grade represents the total enrollment of the school (Not %)
GRADE B - 51 TO 75	
GRADE C - 26 TO 50	
GRADE D - 10 TO 25	
GRADE E - <10	

Note: The Values given in the brackets denote the difference between the Pre and Post Test Scores.
(For Example: If the Pre-Test Grade is 'C' and the Post-Test Grade is 'A', then the progress is +2)

SCHOOL GRADE - BB

Status Gr. B (+1) Performance Gr. B (0)

OVERALL PERFORMANCE GRADES

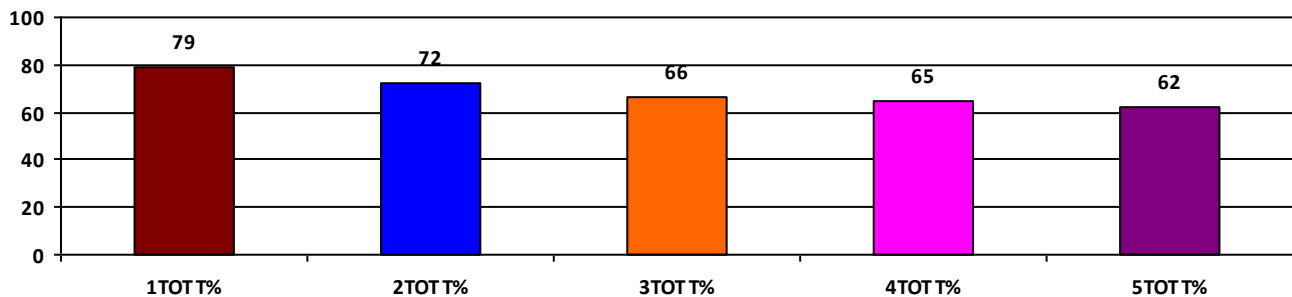
	Boys	Girls	Total
SCHOOL GR.	B	B	B
Diff. to Pre-Test	(0)	(0)	(0)
DIST. GR.	B	B	B
STATE GR.	B	B	B

CLASSWISE APPEARED

DETAILS	I STD	II STD	III STD	IV STD	V STD
BOYS	5	4	3	5	6
GIRLS	4	5	10	5	4
TOTAL	9	9	13	10	10
Diff. to Pre-Test	(-1)	(0)	(+1)	(+1)	(+1)

CLASSWISE PERFORMANCE GRADES (% of marks)

DETAILS	I STD	II STD	III STD	IV STD	V STD
%	79	72	66	65	62
SCHOOL GR.	A	B	B	B	B
Diff. to Pre-Test	(0)	(0)	(0)	(0)	(0)
DIST. GR.	B	B	B	B	B
STATE GR.	A	B	B	B	B



GRADEWISE PERFORMANCE (NO. OF STUDENTS)

ENGLISH	1 Std	2 Std	3 Std	4 Std	5 Std	TAMIL	1 Std	2 Std	3 Std	4 Std	5 Std
GR. A	6	2	9	1	2	GR. A	5	5	5	5	4
GR. B	3	6	0	4	5	GR. B	4	3	5	4	4
GR. C	0	1	3	5	2	GR. C	0	1	1	1	2
GR. D	0	0	1	0	1	GR. D	0	0	2	0	0
GR. E	0	0	0	0	0	GR. E	0	0	0	0	0

DEAL POST TEST 2019-20 - SCHOOL REPORT CARD

KARAIKAL
DIS Z2

34040607003 **GPS - SERUMAVILANGAI**

All Grades represent the following scorings in % *

GRADE A - >75	* School Status Grade represents the total enrollment of the school (Not %)
GRADE B - 51 TO 75	
GRADE C - 26 TO 50	
GRADE D - 10 TO 25	
GRADE E - <10	

Note: The Values given in the brackets denote the difference between the Pre and Post Test Scores.
(For Example: If the Pre-Test Grade is 'C' and the Post-Test Grade is 'A', then the progress is +2)

SCHOOL GRADE - BA

Status Gr. B (0) Performance Gr. A(+1)

OVERALL PERFORMANCE GRADES

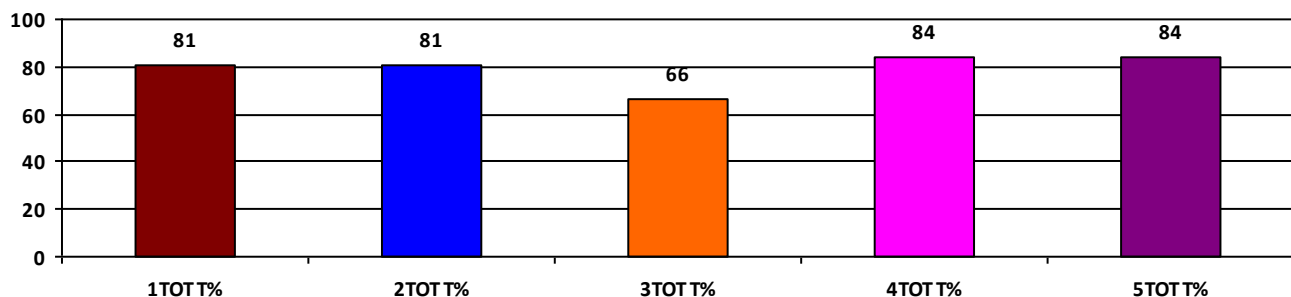
	Boys	Girls	Total
SCHOOL GR.	A	A	A
Diff. to Pre-Test	(+1)	(+1)	(+1)
DIST. GR.	B	B	B
STATE GR.	B	B	B

CLASSWISE APPEARED

DETAILS	I STD	II STD	III STD	IV STD	V STD
BOYS	11	6	5	7	3
GIRLS	7	3	4	6	9
TOTAL	18	9	9	13	12
Diff. to Pre-Test	(+1)	(+1)	(+1)	(0)	(0)

CLASSWISE PERFORMANCE GRADES (% of marks)

DETAILS	I STD	II STD	III STD	IV STD	V STD
%	81	81	66	84	84
SCHOOL GR.	A	A	B	A	A
Diff. to Pre-Test	(+1)	(+1)	(0)	(+1)	(+1)
DIST. GR.	B	B	B	B	B
STATE GR.	A	B	B	B	B



GRADEWISE PERFORMANCE (NO. OF STUDENTS)

ENGLISH	1 Std	2 Std	3 Std	4 Std	5 Std	TAMIL	1 Std	2 Std	3 Std	4 Std	5 Std
GR. A	13	6	3	7	10	GR. A	12	8	7	11	11
GR. B	5	1	2	5	1	GR. B	5	0	1	2	0
GR. C	0	2	2	1	0	GR. C	1	1	0	0	0
GR. D	0	0	2	0	1	GR. D	0	0	1	0	1
GR. E	0	0	0	0	0	GR. E	0	0	0	0	0

DEAL POST TEST 2019-20 - SCHOOL REPORT CARD

KARAIKAL
DIS Z2

34040607101 **GPS - SUBRAYAPURAM**

All Grades represent the following scorings in % *

GRADE A - >75	* School Status Grade represents the total enrollment of the school (Not %)
GRADE B - 51 TO 75	
GRADE C - 26 TO 50	
GRADE D - 10 TO 25	
GRADE E - <10	

Note: The Values given in the brackets denote the difference between the Pre and Post Test Scores.
(For Example: If the Pre-Test Grade is 'C' and the Post-Test Grade is 'A', then the progress is +2)

SCHOOL GRADE - BB

Status Gr. B (0) Performance Gr. B (0)

OVERALL PERFORMANCE GRADES

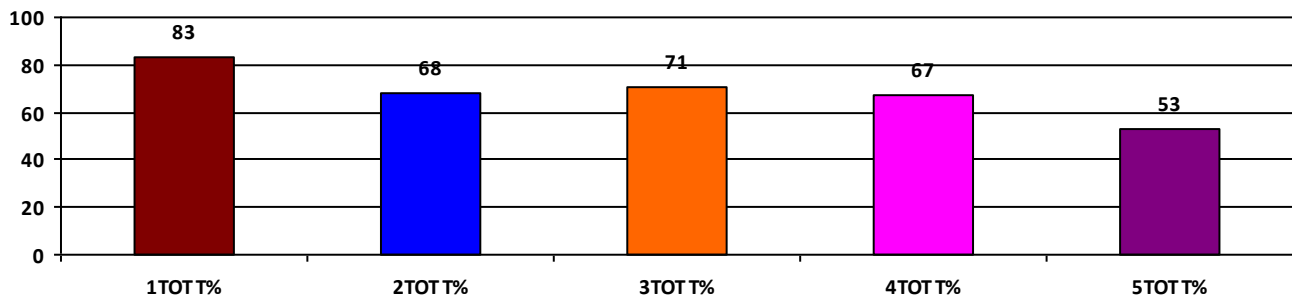
	Boys	Girls	Total
SCHOOL GR.	B	B	B
Diff. to Pre-Test	(0)	(0)	(0)
DIST. GR.	B	B	B
STATE GR.	B	B	B

CLASSWISE APPEARED

DETAILS	I STD	II STD	III STD	IV STD	V STD
BOYS	4	3	8	5	4
GIRLS	3	5	5	8	5
TOTAL	7	8	13	13	9
Diff. to Pre-Test	(0)	(+1)	(+1)	(0)	(-3)

CLASSWISE PERFORMANCE GRADES (% of marks)

DETAILS	I STD	II STD	III STD	IV STD	V STD
%	83	68	71	67	53
SCHOOL GR.	A	B	B	B	B
Diff. to Pre-Test	(+1)	(0)	(0)	(0)	(0)
DIST. GR.	B	B	B	B	B
STATE GR.	A	B	B	B	B



GRADEWISE PERFORMANCE (NO. OF STUDENTS)

ENGLISH	1 Std	2 Std	3 Std	4 Std	5 Std	TAMIL	1 Std	2 Std	3 Std	4 Std	5 Std
GR. A	7	1	3	6	3	GR. A	5	5	10	7	3
GR. B	0	5	8	3	2	GR. B	2	1	2	3	1
GR. C	0	2	1	2	2	GR. C	0	2	0	1	3
GR. D	0	0	1	2	2	GR. D	0	0	1	1	2
GR. E	0	0	0	0	0	GR. E	0	0	0	1	0

DEAL POST TEST 2019-20 - SCHOOL REPORT CARD

KARAIKAL
DIS Z2

34040607501 **GPS - NALLAZHANDUR**

All Grades represent the following scorings in % *

GRADE A - >75	* School Status Grade represents the total enrollment of the school (Not %)
GRADE B - 51 TO 75	
GRADE C - 26 TO 50	
GRADE D - 10 TO 25	
GRADE E - <10	

Note: The Values given in the brackets denote the difference between the Pre and Post Test Scores.
(For Example: If the Pre-Test Grade is 'C' and the Post-Test Grade is 'A', then the progress is +2)

SCHOOL GRADE - CA

Status Gr. C (0) Performance Gr. A(+2)

OVERALL PERFORMANCE GRADES

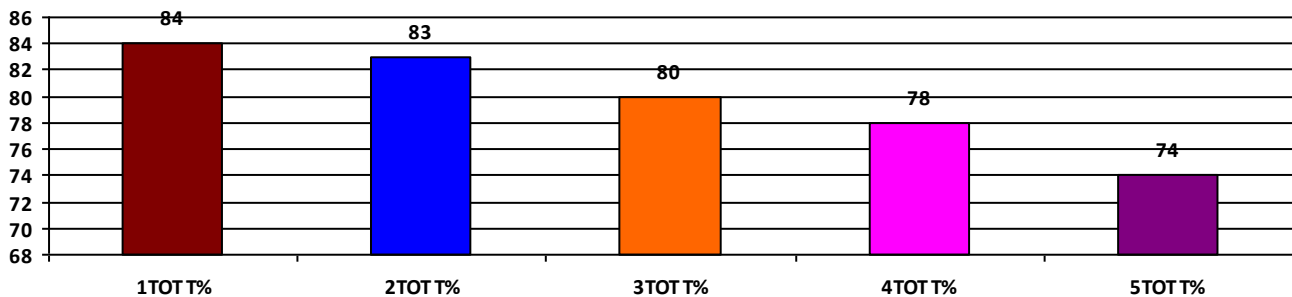
	Boys	Girls	Total
SCHOOL GR.	A	A	A
Diff. to Pre-Test	(+2)	(+2)	(+2)
DIST. GR.	B	B	B
STATE GR.	B	B	B

CLASSWISE APPEARED

DETAILS	I STD	II STD	III STD	IV STD	V STD
BOYS	4	3	2	2	2
GIRLS	4	2	2	5	2
TOTAL	8	5	4	7	4
Diff. to Pre-Test	(0)	(0)	(0)	(0)	(0)

CLASSWISE PERFORMANCE GRADES (% of marks)

DETAILS	I STD	II STD	III STD	IV STD	V STD
%	84	83	80	78	74
SCHOOL GR.	A	A	A	A	B
Diff. to Pre-Test	(+2)	(+2)	(+2)	(+2)	(+1)
DIST. GR.	B	B	B	B	B
STATE GR.	A	B	B	B	B



GRADEWISE PERFORMANCE (NO. OF STUDENTS)

ENGLISH	1 Std	2 Std	3 Std	4 Std	5 Std	TAMIL	1 Std	2 Std	3 Std	4 Std	5 Std
GR. A	6	3	2	4	1	GR. A	7	4	2	4	2
GR. B	2	2	2	3	3	GR. B	1	0	2	3	1
GR. C	0	0	0	0	0	GR. C	0	1	0	0	1
GR. D	0	0	0	0	0	GR. D	0	0	0	0	0
GR. E	0	0	0	0	0	GR. E	0	0	0	0	0

DEAL POST TEST 2019-20 - SCHOOL REPORT CARD

KARAIKAL
DIS Z2

34040607701 **GPS - AMBAGARATHUR**

All Grades represent the following scorings in % *

GRADE A - >75	
GRADE B - 51 TO 75	* School Status Grade
GRADE C - 26 TO 50	represents the total
GRADE D - 10 TO 25	enrollment of the
GRADE E - <10	school (Not %)

Note: The Values given in the brackets denote the difference between the Pre and Post Test Scores.
(For Example: If the Pre-Test Grade is 'C' and the Post-Test Grade is 'A', then the progress is +2)

SCHOOL GRADE - AB

Status Gr. A (0) Performance Gr. B(+1)

OVERALL PERFORMANCE GRADES

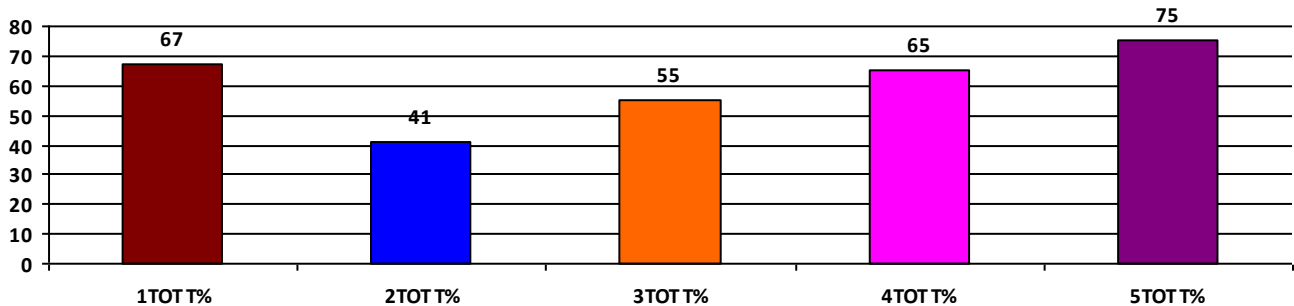
	Boys	Girls	Total
SCHOOL GR.	B	B	B
Diff. to Pre-Test	(+1)	(0)	(+1)
DIST. GR.	B	B	B
STATE GR.	B	B	B

CLASSWISE APPEARED

DETAILS	I STD	II STD	III STD	IV STD	V STD
BOYS	16	13	16	30	20
GIRLS	8	16	16	16	21
TOTAL	24	29	32	46	41
Diff. to Pre-Test	(0)	(+1)	(-1)	(-2)	(+4)

CLASSWISE PERFORMANCE GRADES (% of marks)

DETAILS	I STD	II STD	III STD	IV STD	V STD
%	67	41	55	65	75
SCHOOL GR.	B	C	B	B	B
Diff. to Pre-Test	(0)	(0)	(+1)	(0)	(0)
DIST. GR.	B	B	B	B	B
STATE GR.	A	B	B	B	B



GRADEWISE PERFORMANCE (NO. OF STUDENTS)

ENGLISH	1 Std	2 Std	3 Std	4 Std	5 Std	TAMIL	1 Std	2 Std	3 Std	4 Std	5 Std
GR. A	12	1	5	13	23	GR. A	8	8	9	23	24
GR. B	6	5	8	20	11	GR. B	11	3	12	14	8
GR. C	5	11	13	11	7	GR. C	3	11	10	6	6
GR. D	0	11	6	1	0	GR. D	2	7	1	3	3
GR. E	1	1	0	1	0	GR. E	0	0	0	0	0

DEAL POST TEST 2019-20 - SCHOOL REPORT CARD

KARAIKAL
DIS Z2

34040607706 GPS - KANNAPUR

All Grades represent the following scorings in % *

GRADE A - >75	
GRADE B - 51 TO 75	* School Status Grade
GRADE C - 26 TO 50	represents the total
GRADE D - 10 TO 25	enrollment of the
GRADE E - <10	school (Not %)

Note: The Values given in the brackets denote the difference between the Pre and Post Test Scores.
(For Example: If the Pre-Test Grade is 'C' and the Post-Test Grade is 'A', then the progress is +2)

SCHOOL GRADE - CB

Status Gr. C (0) Performance Gr. B(+1)

OVERALL PERFORMANCE GRADES

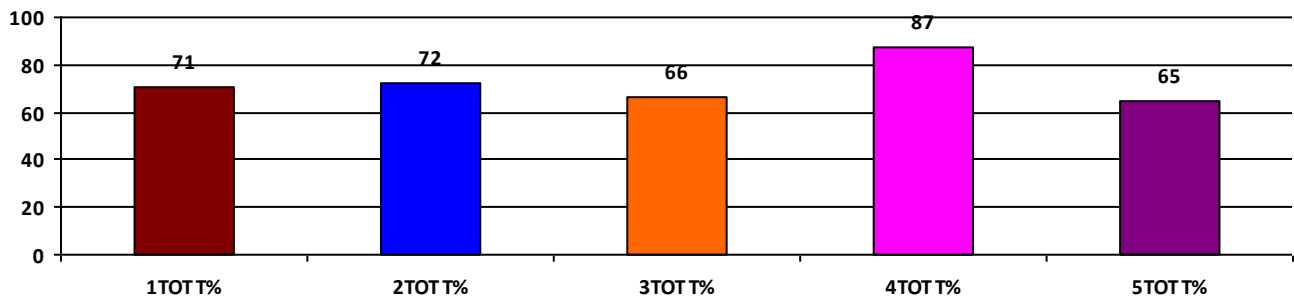
	Boys	Girls	Total
SCHOOL GR.	B	A	B
Diff. to Pre-Test	(+1)	(+1)	(+1)
DIST. GR.	B	B	B
STATE GR.	B	B	B

CLASSWISE APPEARED

DETAILS	I STD	II STD	III STD	IV STD	V STD
BOYS	5	4	4	4	6
GIRLS	3	3	2	3	2
TOTAL	8	7	6	7	8
Diff. to Pre-Test	(0)	(+1)	(+1)	(-1)	(0)

CLASSWISE PERFORMANCE GRADES (% of marks)

DETAILS	I STD	II STD	III STD	IV STD	V STD
%	71	72	66	87	65
SCHOOL GR.	B	B	B	A	B
Diff. to Pre-Test	(+1)	(+1)	(0)	(+1)	(+1)
DIST. GR.	B	B	B	B	B
STATE GR.	A	B	B	B	B



GRADEWISE PERFORMANCE (NO. OF STUDENTS)

ENGLISH	1 Std	2 Std	3 Std	4 Std	5 Std	TAMIL	1 Std	2 Std	3 Std	4 Std	5 Std
GR. A	2	1	1	6	1	GR. A	3	5	3	6	4
GR. B	5	4	4	1	6	GR. B	4	0	2	1	3
GR. C	1	2	1	0	0	GR. C	1	2	1	0	0
GR. D	0	0	0	0	1	GR. D	0	0	0	0	1
GR. E	0	0	0	0	0	GR. E	0	0	0	0	0

DEAL POST TEST 2019-20 - SCHOOL REPORT CARD

KARAIKAL
DIS Z2

34040607901 **GPS - PANDARAVADAI**

All Grades represent the following scorings in % *

GRADE A - >75	* School Status Grade represents the total enrollment of the school (Not %)
GRADE B - 51 TO 75	
GRADE C - 26 TO 50	
GRADE D - 10 TO 25	
GRADE E - <10	

Note: The Values given in the brackets denote the difference between the Pre and Post Test Scores.
(For Example: If the Pre-Test Grade is 'C' and the Post-Test Grade is 'A', then the progress is +2)

SCHOOL GRADE - BB

Status Gr. B (0) Performance Gr. B(+1)

OVERALL PERFORMANCE GRADES

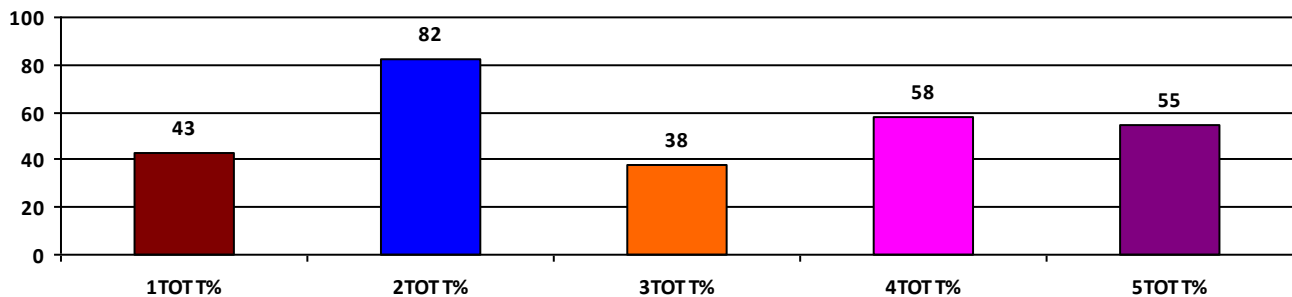
	Boys	Girls	Total
SCHOOL GR.	C	B	B
Diff. to Pre-Test	(0)	(+1)	(+1)
DIST. GR.	B	B	B
STATE GR.	B	B	B

CLASSWISE APPEARED

DETAILS	I STD	II STD	III STD	IV STD	V STD
BOYS	8	4	8	4	4
GIRLS	3	5	4	4	5
TOTAL	11	9	12	8	9
Diff. to Pre-Test	(-2)	(+1)	(-1)	(+1)	(0)

CLASSWISE PERFORMANCE GRADES (% of marks)

DETAILS	I STD	II STD	III STD	IV STD	V STD
%	43	82	38	58	55
SCHOOL GR.	C	A	C	B	B
Diff. to Pre-Test	(0)	(+1)	(0)	(+1)	(0)
DIST. GR.	B	B	B	B	B
STATE GR.	A	B	B	B	B



GRADEWISE PERFORMANCE (NO. OF STUDENTS)

ENGLISH	1 Std	2 Std	3 Std	4 Std	5 Std	TAMIL	1 Std	2 Std	3 Std	4 Std	5 Std
GR. A	0	5	0	1	4	GR. A	0	6	1	4	4
GR. B	3	3	2	4	0	GR. B	5	3	5	2	2
GR. C	5	1	3	1	3	GR. C	5	0	5	2	1
GR. D	3	0	7	1	2	GR. D	1	0	1	0	2
GR. E	0	0	0	1	0	GR. E	0	0	0	0	0

DEAL POST TEST 2019-20 - SCHOOL REPORT CARD

KARAIKAL
DIS Z2

34040608404 **GPS - AGALANGANNU**

All Grades represent the following scorings in % *

GRADE A - >75	
GRADE B - 51 TO 75	* School Status Grade
GRADE C - 26 TO 50	represents the total
GRADE D - 10 TO 25	enrollment of the
GRADE E - <10	school (Not %)

Note: The Values given in the brackets denote the difference between the Pre and Post Test Scores.
(For Example: If the Pre-Test Grade is 'C' and the Post-Test Grade is 'A', then the progress is +2)

SCHOOL GRADE - CA

Status Gr. C (0) Performance Gr. A(+1)

OVERALL PERFORMANCE GRADES

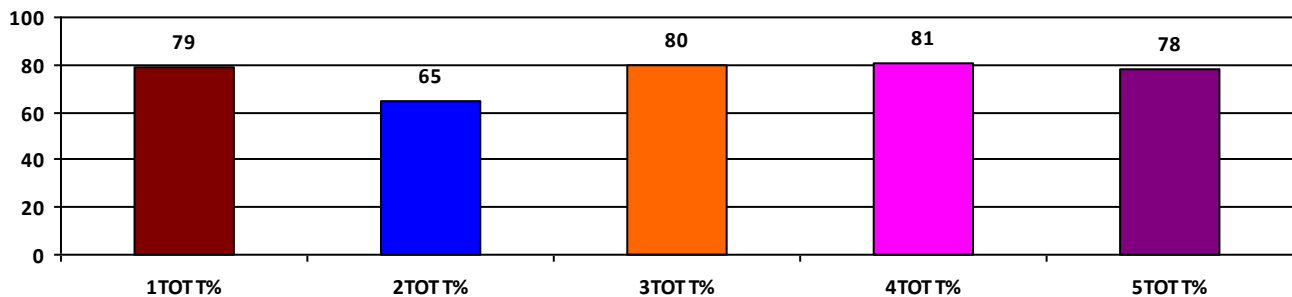
	Boys	Girls	Total
SCHOOL GR.	A	A	A
Diff. to Pre-Test	(+1)	(+1)	(+1)
DIST. GR.	B	B	B
STATE GR.	B	B	B

CLASSWISE APPEARED

DETAILS	I STD	II STD	III STD	IV STD	V STD
BOYS	5	3	3	3	4
GIRLS	7	3	5	3	3
TOTAL	12	6	8	6	7
Diff. to Pre-Test	(+2)	(+1)	(+1)	(+1)	(0)

CLASSWISE PERFORMANCE GRADES (% of marks)

DETAILS	I STD	II STD	III STD	IV STD	V STD
%	79	65	80	81	78
SCHOOL GR.	A	B	A	A	A
Diff. to Pre-Test	(0)	(+1)	(+1)	(+1)	(+1)
DIST. GR.	B	B	B	B	B
STATE GR.	A	B	B	B	B



GRADEWISE PERFORMANCE (NO. OF STUDENTS)

ENGLISH	1 Std	2 Std	3 Std	4 Std	5 Std	TAMIL	1 Std	2 Std	3 Std	4 Std	5 Std
GR. A	9	2	4	4	4	GR. A	9	3	7	5	4
GR. B	0	1	4	2	3	GR. B	2	1	1	1	2
GR. C	2	2	0	0	0	GR. C	1	2	0	0	1
GR. D	1	1	0	0	0	GR. D	0	0	0	0	0
GR. E	0	0	0	0	0	GR. E	0	0	0	0	0

DEAL POST TEST 2019-20 - SCHOOL REPORT CARD

KARAIKAL
DIS Z2

34040608405 **GPS - MUPPAITHANGUDY**

All Grades represent the following scorings in % *

GRADE A - >75	
GRADE B - 51 TO 75	* School Status Grade
GRADE C - 26 TO 50	represents the total
GRADE D - 10 TO 25	enrollment of the
GRADE E - <10	school (Not %)

Note: The Values given in the brackets denote the difference between the Pre and Post Test Scores.
(For Example: If the Pre-Test Grade is 'C' and the Post-Test Grade is 'A', then the progress is +2)

SCHOOL GRADE - BB

Status Gr. B (0) Performance Gr. B (0)

OVERALL PERFORMANCE GRADES

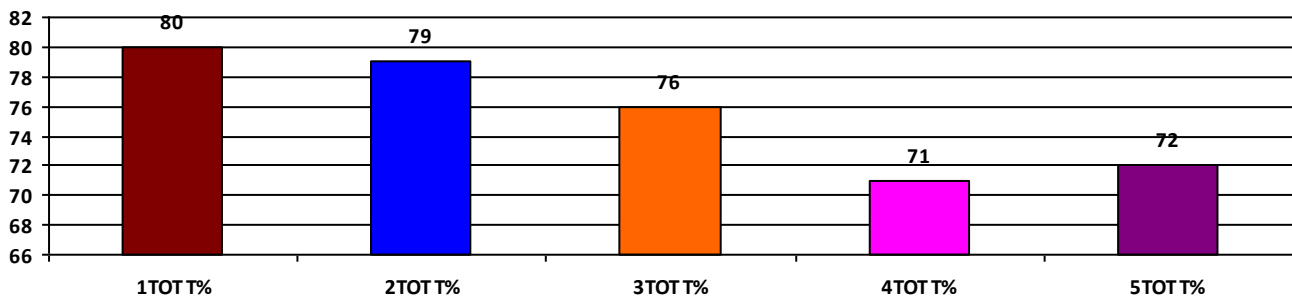
	Boys	Girls	Total
SCHOOL GR.	B	A	B
Diff. to Pre-Test	(0)	(+1)	(0)
DIST. GR.	B	B	B
STATE GR.	B	B	B

CLASSWISE APPEARED

DETAILS	I STD	II STD	III STD	IV STD	V STD
BOYS	5	4	6	5	8
GIRLS	3	5	6	4	4
TOTAL	8	9	12	9	12
Diff. to Pre-Test	(0)	(+2)	(0)	(-1)	(+1)

CLASSWISE PERFORMANCE GRADES (% of marks)

DETAILS	I STD	II STD	III STD	IV STD	V STD
%	80	79	76	71	72
SCHOOL GR.	A	A	A	B	B
Diff. to Pre-Test	(0)	(+1)	(+1)	(0)	(0)
DIST. GR.	B	B	B	B	B
STATE GR.	A	B	B	B	B



GRADEWISE PERFORMANCE (NO. OF STUDENTS)

ENGLISH	1 Std	2 Std	3 Std	4 Std	5 Std	TAMIL	1 Std	2 Std	3 Std	4 Std	5 Std
GR. A	6	5	8	2	6	GR. A	7	7	7	5	2
GR. B	1	2	2	6	6	GR. B	0	1	3	3	8
GR. C	1	2	2	1	0	GR. C	1	1	2	1	2
GR. D	0	0	0	0	0	GR. D	0	0	0	0	0
GR. E	0	0	0	0	0	GR. E	0	0	0	0	0

DEAL POST TEST 2019-20 - SCHOOL REPORT CARD

KARAIKAL
DIS Z2

34040609901 **GPS - PETTAI, THIRUNALLAR**

All Grades represent the following scorings in % *

GRADE A - >75	
GRADE B - 51 TO 75	* School Status Grade
GRADE C - 26 TO 50	represents the total
GRADE D - 10 TO 25	enrollment of the
GRADE E - <10	school (Not %)

Note: The Values given in the brackets denote the difference between the Pre and Post Test Scores.
(For Example: If the Pre-Test Grade is 'C' and the Post-Test Grade is 'A', then the progress is +2)

SCHOOL GRADE - BB

Status Gr. B (0) Performance Gr. B(+1)

OVERALL PERFORMANCE GRADES

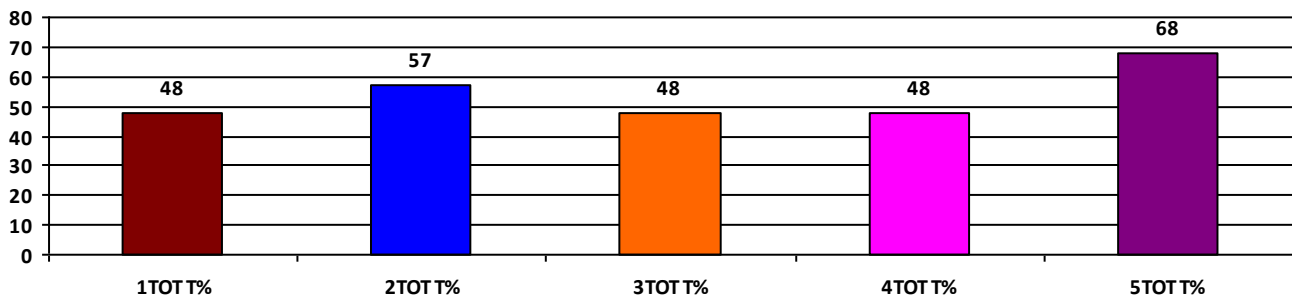
	Boys	Girls	Total
SCHOOL GR.	C	B	B
Diff. to Pre-Test	(0)	(+1)	(+1)
DIST. GR.	B	B	B
STATE GR.	B	B	B

CLASSWISE APPEARED

DETAILS	I STD	II STD	III STD	IV STD	V STD
BOYS	6	6	5	12	8
GIRLS	5	6	5	9	6
TOTAL	11	12	10	21	14
Diff. to Pre-Test	(+1)	(+1)	(+1)	(+2)	(+1)

CLASSWISE PERFORMANCE GRADES (% of marks)

DETAILS	I STD	II STD	III STD	IV STD	V STD
%	48	57	48	48	68
SCHOOL GR.	C	B	C	C	B
Diff. to Pre-Test	(0)	(+1)	(0)	(0)	(+1)
DIST. GR.	B	B	B	B	B
STATE GR.	A	B	B	B	B



GRADEWISE PERFORMANCE (NO. OF STUDENTS)

ENGLISH	1 Std	2 Std	3 Std	4 Std	5 Std	TAMIL	1 Std	2 Std	3 Std	4 Std	5 Std
GR. A	0	0	0	0	6	GR. A	8	2	5	7	6
GR. B	0	6	1	5	3	GR. B	1	6	3	7	7
GR. C	3	6	5	7	5	GR. C	1	4	1	6	1
GR. D	6	0	4	9	0	GR. D	1	0	1	1	0
GR. E	2	0	0	0	0	GR. E	0	0	0	0	0

DEAL POST TEST 2019-20 - SCHOOL REPORT CARD

KARAIKAL
DIS Z2

34040610602 **GPS - PATHAKUDY**

All Grades represent the following scorings in % *

GRADE A - >75	* School Status Grade represents the total enrollment of the school (Not %)
GRADE B - 51 TO 75	
GRADE C - 26 TO 50	
GRADE D - 10 TO 25	
GRADE E - <10	

Note: The Values given in the brackets denote the difference between the Pre and Post Test Scores.
(For Example: If the Pre-Test Grade is 'C' and the Post-Test Grade is 'A', then the progress is +2)

SCHOOL GRADE - DB

Status Gr. D (0) Performance Gr. B(+1)

OVERALL PERFORMANCE GRADES

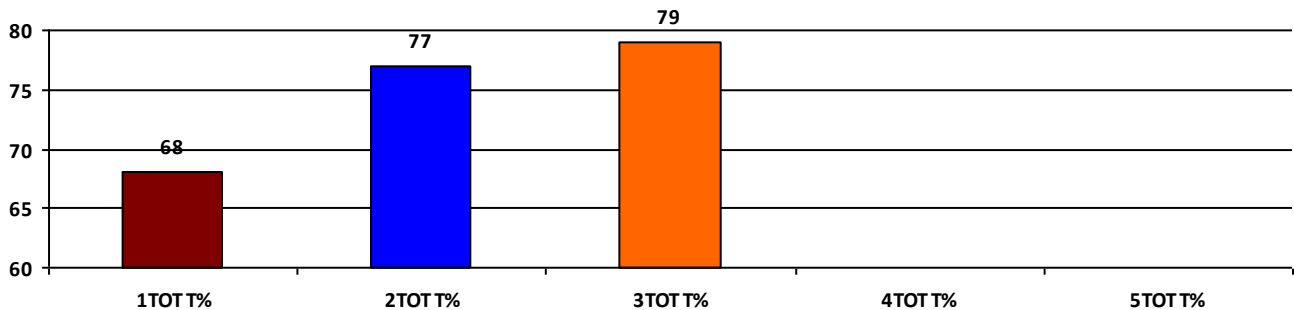
	Boys	Girls	Total
SCHOOL GR.	A	B	B
Diff. to Pre-Test	(+2)	(+1)	(+1)
DIST. GR.	B	B	B
STATE GR.	B	B	B

CLASSWISE APPEARED

DETAILS	I STD	II STD	III STD	IV STD	V STD
BOYS	2	3	5	0	0
GIRLS	4	2	1	0	0
TOTAL	6	5	6	0	0
Diff. to Pre-Test	(0)	(0)	(0)	(0)	(0)

CLASSWISE PERFORMANCE GRADES (% of marks)

DETAILS	I STD	II STD	III STD	IV STD	V STD
%	68	77	79	NA	NA
SCHOOL GR.	B	A	A	NA	NA
Diff. to Pre-Test	(+1)	(+2)	(+2)	(+8)	(+8)
DIST. GR.	B	B	B	B	B
STATE GR.	A	B	B	B	B



GRADEWISE PERFORMANCE (NO. OF STUDENTS)

ENGLISH	1 Std	2 Std	3 Std	4 Std	5 Std	TAMIL	1 Std	2 Std	3 Std	4 Std	5 Std
GR. A	0	2	5	0	0	GR. A	5	4	3	0	0
GR. B	4	3	1	0	0	GR. B	1	1	3	0	0
GR. C	2	0	0	0	0	GR. C	0	0	0	0	0
GR. D	0	0	0	0	0	GR. D	0	0	0	0	0
GR. E	0	0	0	0	0	GR. E	0	0	0	0	0

DEAL POST TEST 2019-20 - SCHOOL REPORT CARD

KARAIKAL
DIS Z2

34040610603 **GPS - THAKKALUR**

All Grades represent the following scorings in % *

GRADE A - >75	
GRADE B - 51 TO 75	* School Status Grade
GRADE C - 26 TO 50	represents the total
GRADE D - 10 TO 25	enrollment of the
GRADE E - <10	school (Not %)

Note: The Values given in the brackets denote the difference between the Pre and Post Test Scores.
(For Example: If the Pre-Test Grade is 'C' and the Post-Test Grade is 'A', then the progress is +2)

SCHOOL GRADE - CA

Status Gr. C (0)	Performance Gr. A(+1)
------------------	-----------------------

OVERALL PERFORMANCE GRADES

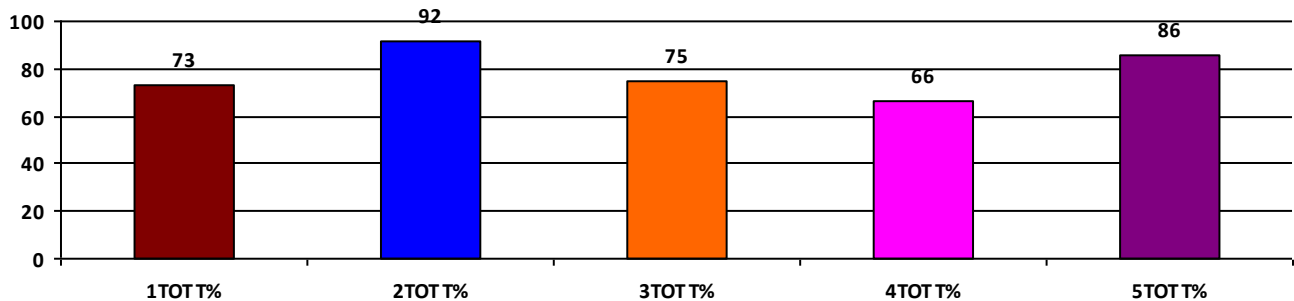
	Boys	Girls	Total
SCHOOL GR.	B	A	A
Diff. to Pre-Test	(0)	(0)	(+1)
DIST. GR.	B	B	B
STATE GR.	B	B	B

CLASSWISE APPEARED

DETAILS	I STD	II STD	III STD	IV STD	V STD
BOYS	4	4	4	5	9
GIRLS	4	3	4	3	3
TOTAL	8	7	8	8	12
Diff. to Pre-Test	(-2)	(0)	(0)	(0)	(-2)

CLASSWISE PERFORMANCE GRADES (% of marks)

DETAILS	I STD	II STD	III STD	IV STD	V STD
%	73	92	75	66	86
SCHOOL GR.	B	A	B	B	A
Diff. to Pre-Test	(-1)	(0)	(0)	(0)	(+1)
DIST. GR.	B	B	B	B	B
STATE GR.	A	B	B	B	B



GRADEWISE PERFORMANCE (NO. OF STUDENTS)

ENGLISH	1 Std	2 Std	3 Std	4 Std	5 Std	TAMIL	1 Std	2 Std	3 Std	4 Std	5 Std
GR. A	5	7	2	3	9	GR. A	6	7	6	5	11
GR. B	1	0	5	2	2	GR. B	0	0	1	0	1
GR. C	2	0	1	1	1	GR. C	1	0	1	2	0
GR. D	0	0	0	2	0	GR. D	1	0	0	1	0
GR. E	0	0	0	0	0	GR. E	0	0	0	0	0

DEAL POST TEST 2019-20 - SCHOOL REPORT CARD

KARAIKAL
DIS Z2

34040610604 GPS - ATHIPADUGAI

All Grades represent the following scorings in % *

GRADE A - >75	* School Status Grade represents the total enrollment of the school (Not %)
GRADE B - 51 TO 75	
GRADE C - 26 TO 50	
GRADE D - 10 TO 25	
GRADE E - <10	

Note: The Values given in the brackets denote the difference between the Pre and Post Test Scores.
(For Example: If the Pre-Test Grade is 'C' and the Post-Test Grade is 'A', then the progress is +2)

SCHOOL GRADE - CA

Status Gr. C (0) Performance Gr. A(+1)

OVERALL PERFORMANCE GRADES

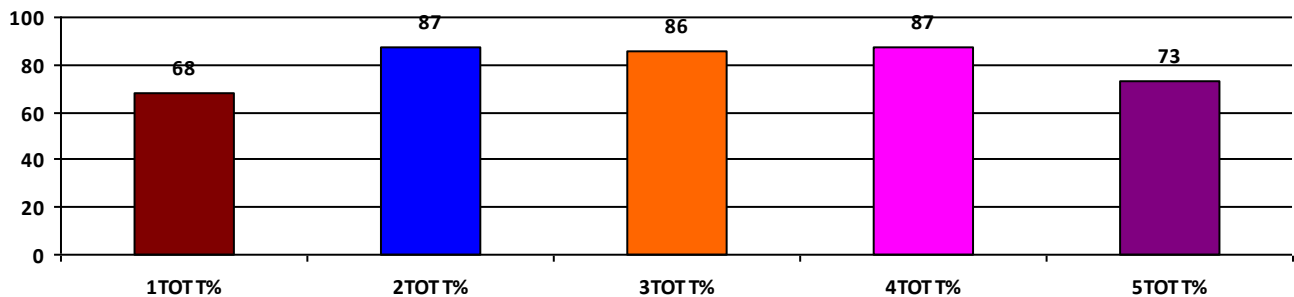
	Boys	Girls	Total
SCHOOL GR.	B	A	A
Diff. to Pre-Test	(0)	(+1)	(+1)
DIST. GR.	B	B	B
STATE GR.	B	B	B

CLASSWISE APPEARED

DETAILS	I STD	II STD	III STD	IV STD	V STD
BOYS	2	3	4	3	2
GIRLS	3	3	2	5	3
TOTAL	5	6	6	8	5
Diff. to Pre-Test	(+2)	(+1)	(0)	(+2)	(+1)

CLASSWISE PERFORMANCE GRADES (% of marks)

DETAILS	I STD	II STD	III STD	IV STD	V STD
%	68	87	86	87	73
SCHOOL GR.	B	A	A	A	B
Diff. to Pre-Test	(0)	(+2)	(+1)	(0)	(+1)
DIST. GR.	B	B	B	B	B
STATE GR.	A	B	B	B	B



GRADEWISE PERFORMANCE (NO. OF STUDENTS)

ENGLISH	1 Std	2 Std	3 Std	4 Std	5 Std	TAMIL	1 Std	2 Std	3 Std	4 Std	5 Std
GR. A	3	5	5	7	3	GR. A	3	5	5	7	3
GR. B	1	0	1	0	0	GR. B	1	1	1	0	1
GR. C	1	1	0	0	1	GR. C	0	0	0	1	1
GR. D	0	0	0	1	1	GR. D	1	0	0	0	0
GR. E	0	0	0	0	0	GR. E	0	0	0	0	0

DEAL POST TEST 2019-20 - SCHOOL REPORT CARD

KARAIKAL
DIS Z2

34040612101 **GPS - VALATHAMANGALAM**

All Grades represent the following scorings in % *

GRADE A - >75	
GRADE B - 51 TO 75	* School Status Grade
GRADE C - 26 TO 50	represents the total
GRADE D - 10 TO 25	enrollment of the
GRADE E - <10	school (Not %)

Note: The Values given in the brackets denote the difference between the Pre and Post Test Scores.
(For Example: If the Pre-Test Grade is 'C' and the Post-Test Grade is 'A', then the progress is +2)

SCHOOL GRADE - CA

Status Gr. C (0) Performance Gr. A(+1)

OVERALL PERFORMANCE GRADES

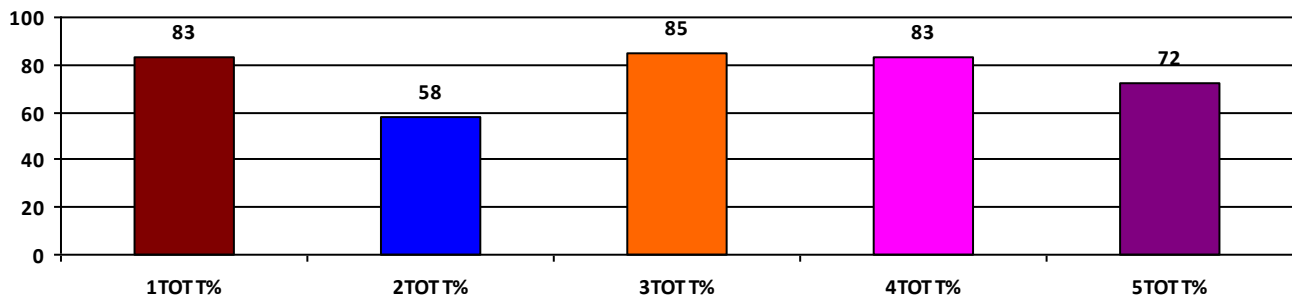
	Boys	Girls	Total
SCHOOL GR.	A	A	A
Diff. to Pre-Test	(+1)	(+1)	(+1)
DIST. GR.	B	B	B
STATE GR.	B	B	B

CLASSWISE APPEARED

DETAILS	I STD	II STD	III STD	IV STD	V STD
BOYS	6	3	9	2	4
GIRLS	1	2	2	1	2
TOTAL	7	5	11	3	6
Diff. to Pre-Test	(-1)	(0)	(0)	(0)	(0)

CLASSWISE PERFORMANCE GRADES (% of marks)

DETAILS	I STD	II STD	III STD	IV STD	V STD
%	83	58	85	83	72
SCHOOL GR.	A	B	A	A	B
Diff. to Pre-Test	(+1)	(0)	(+1)	(+1)	(+1)
DIST. GR.	B	B	B	B	B
STATE GR.	A	B	B	B	B



GRADEWISE PERFORMANCE (NO. OF STUDENTS)

ENGLISH	1 Std	2 Std	3 Std	4 Std	5 Std	TAMIL	1 Std	2 Std	3 Std	4 Std	5 Std
GR. A	7	0	10	2	1	GR. A	2	4	10	2	4
GR. B	0	3	1	1	4	GR. B	5	0	0	1	2
GR. C	0	1	0	0	1	GR. C	0	0	1	0	0
GR. D	0	0	0	0	0	GR. D	0	0	0	0	0
GR. E	0	1	0	0	0	GR. E	0	1	0	0	0

DEAL POST TEST 2019-20 - SCHOOL REPORT CARD

KARAIKAL
DIS Z2

34040612403 GGPS - T.R.PATTINAM

All Grades represent the following scorings in % *

GRADE A - >75	* School Status Grade represents the total enrollment of the school (Not %)
GRADE B - 51 TO 75	
GRADE C - 26 TO 50	
GRADE D - 10 TO 25	
GRADE E - <10	

Note: The Values given in the brackets denote the difference between the Pre and Post Test Scores.
(For Example: If the Pre-Test Grade is 'C' and the Post-Test Grade is 'A', then the progress is +2)

SCHOOL GRADE - CB

Status Gr. C (0) Performance Gr. B (0)

OVERALL PERFORMANCE GRADES

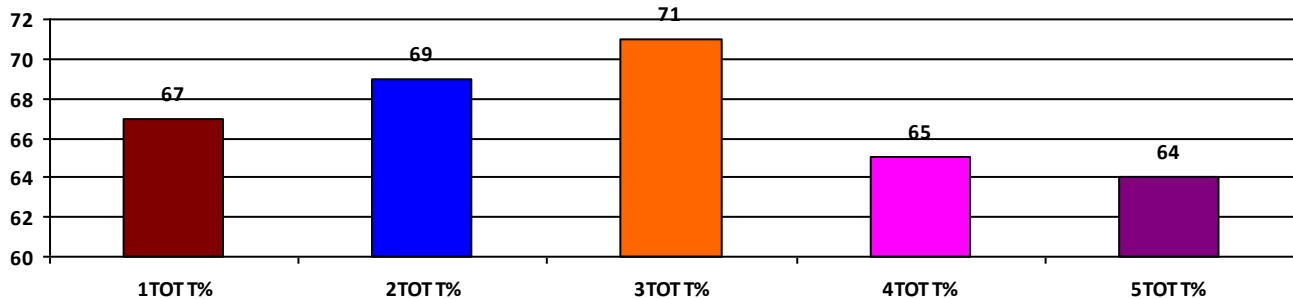
	Boys	Girls	Total
SCHOOL GR.	B	B	B
Diff. to Pre-Test	(+1)	(0)	(0)
DIST. GR.	B	B	B
STATE GR.	B	B	B

CLASSWISE APPEARED

DETAILS	I STD	II STD	III STD	IV STD	V STD
BOYS	4	3	3	5	4
GIRLS	4	7	2	10	3
TOTAL	8	10	5	15	7
Diff. to Pre-Test	(-1)	(-1)	(0)	(0)	(-1)

CLASSWISE PERFORMANCE GRADES (% of marks)

DETAILS	I STD	II STD	III STD	IV STD	V STD
%	67	69	71	65	64
SCHOOL GR.	B	B	B	B	B
Diff. to Pre-Test	(0)	(0)	(0)	(0)	(0)
DIST. GR.	B	B	B	B	B
STATE GR.	A	B	B	B	B



GRADEWISE PERFORMANCE (NO. OF STUDENTS)

ENGLISH	1 Std	2 Std	3 Std	4 Std	5 Std	TAMIL	1 Std	2 Std	3 Std	4 Std	5 Std
GR. A	2	4	4	3	3	GR. A	4	6	4	10	3
GR. B	1	2	0	4	2	GR. B	3	2	0	3	2
GR. C	5	3	0	5	1	GR. C	1	2	0	1	1
GR. D	0	1	0	3	1	GR. D	0	0	1	1	0
GR. E	0	0	1	0	0	GR. E	0	0	0	0	1

DEAL POST TEST 2019-20 - SCHOOL REPORT CARD

KARAIKAL
DIS Z2

34040612404 **GPS - VADAKATTALAICHERRY**

All Grades represent the following scorings in % *

GRADE A - >75	
GRADE B - 51 TO 75	* School Status Grade
GRADE C - 26 TO 50	represents the total
GRADE D - 10 TO 25	enrollment of the
GRADE E - <10	school (Not %)

Note: The Values given in the brackets denote the difference between the Pre and Post Test Scores.
(For Example: If the Pre-Test Grade is 'C' and the Post-Test Grade is 'A', then the progress is +2)

SCHOOL GRADE - BA

Status Gr. B (0) Performance Gr. A(+1)

OVERALL PERFORMANCE GRADES

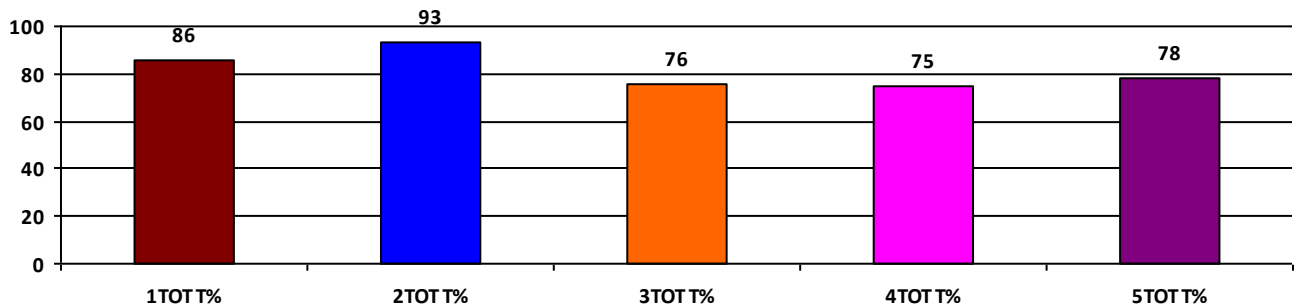
	Boys	Girls	Total
SCHOOL GR.	A	A	A
Diff. to Pre-Test	(+1)	(+1)	(+1)
DIST. GR.	B	B	B
STATE GR.	B	B	B

CLASSWISE APPEARED

DETAILS	I STD	II STD	III STD	IV STD	V STD
BOYS	9	1	8	5	7
GIRLS	9	4	9	7	8
TOTAL	18	5	17	12	15
Diff. to Pre-Test	(-1)	(-1)	(0)	(0)	(-1)

CLASSWISE PERFORMANCE GRADES (% of marks)

DETAILS	I STD	II STD	III STD	IV STD	V STD
%	86	93	76	75	78
SCHOOL GR.	A	A	A	B	A
Diff. to Pre-Test	(+1)	(+1)	(+1)	(+1)	(+1)
DIST. GR.	B	B	B	B	B
STATE GR.	A	B	B	B	B



GRADEWISE PERFORMANCE (NO. OF STUDENTS)

ENGLISH	1 Std	2 Std	3 Std	4 Std	5 Std	TAMIL	1 Std	2 Std	3 Std	4 Std	5 Std
GR. A	15	5	7	7	10	GR. A	14	4	12	6	10
GR. B	2	0	8	3	2	GR. B	4	1	4	5	3
GR. C	1	0	1	2	3	GR. C	0	0	1	1	1
GR. D	0	0	1	0	0	GR. D	0	0	0	0	1
GR. E	0	0	0	0	0	GR. E	0	0	0	0	0

DEAL POST TEST 2019-20 - SCHOOL REPORT CARD

KARAIKAL
DIS Z2

34040612405 **GPS - KEEZHAVANJORE**

All Grades represent the following scorings in % *

GRADE A - >75	* School Status Grade represents the total enrollment of the school (Not %)
GRADE B - 51 TO 75	
GRADE C - 26 TO 50	
GRADE D - 10 TO 25	
GRADE E - <10	

Note: The Values given in the brackets denote the difference between the Pre and Post Test Scores.
(For Example: If the Pre-Test Grade is 'C' and the Post-Test Grade is 'A', then the progress is +2)

SCHOOL GRADE - CB

Status Gr. C (0) Performance Gr. B (0)

OVERALL PERFORMANCE GRADES

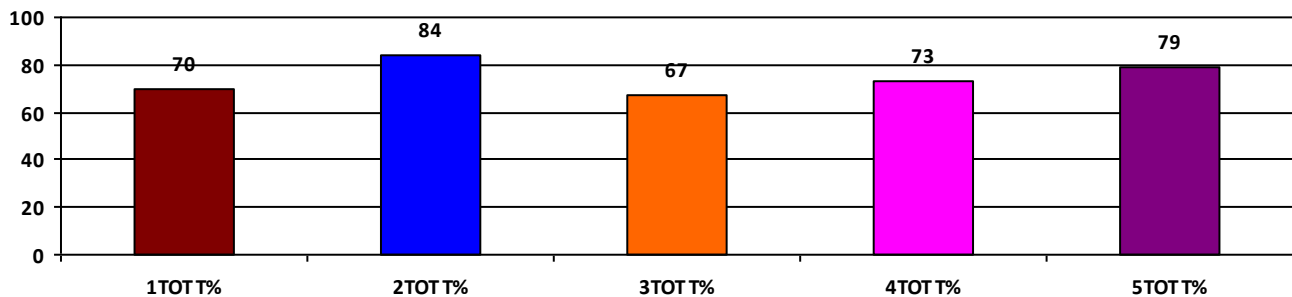
	Boys	Girls	Total
SCHOOL GR.	B	B	B
Diff. to Pre-Test	(0)	(0)	(0)
DIST. GR.	B	B	B
STATE GR.	B	B	B

CLASSWISE APPEARED

DETAILS	I STD	II STD	III STD	IV STD	V STD
BOYS	3	1	4	1	2
GIRLS	6	2	3	6	2
TOTAL	9	3	7	7	4
Diff. to Pre-Test	(+1)	(0)	(-1)	(0)	(0)

CLASSWISE PERFORMANCE GRADES (% of marks)

DETAILS	I STD	II STD	III STD	IV STD	V STD
%	70	84	67	73	79
SCHOOL GR.	B	A	B	B	A
Diff. to Pre-Test	(0)	(+1)	(+1)	(0)	(+1)
DIST. GR.	B	B	B	B	B
STATE GR.	A	B	B	B	B



GRADEWISE PERFORMANCE (NO. OF STUDENTS)

ENGLISH	1 Std	2 Std	3 Std	4 Std	5 Std	TAMIL	1 Std	2 Std	3 Std	4 Std	5 Std
GR. A	5	2	2	2	3	GR. A	5	2	4	6	3
GR. B	2	1	3	3	0	GR. B	2	1	2	1	1
GR. C	2	0	1	2	1	GR. C	1	0	0	0	0
GR. D	0	0	1	0	0	GR. D	1	0	1	0	0
GR. E	0	0	0	0	0	GR. E	0	0	0	0	0

DEAL POST TEST 2019-20 - SCHOOL REPORT CARD

KARAIKAL
DIS Z2

34040612406 GPS - GARUDAPALAYAM, T.R.PATTINAM

All Grades represent the following scorings in % *

GRADE A - >75	* School Status Grade represents the total enrollment of the school (Not %)
GRADE B - 51 TO 75	
GRADE C - 26 TO 50	
GRADE D - 10 TO 25	
GRADE E - <10	

Note: The Values given in the brackets denote the difference between the Pre and Post Test Scores.
(For Example: If the Pre-Test Grade is 'C' and the Post-Test Grade is 'A', then the progress is +2)

SCHOOL GRADE - BA

Status Gr. B (0) Performance Gr. A (0)

OVERALL PERFORMANCE GRADES

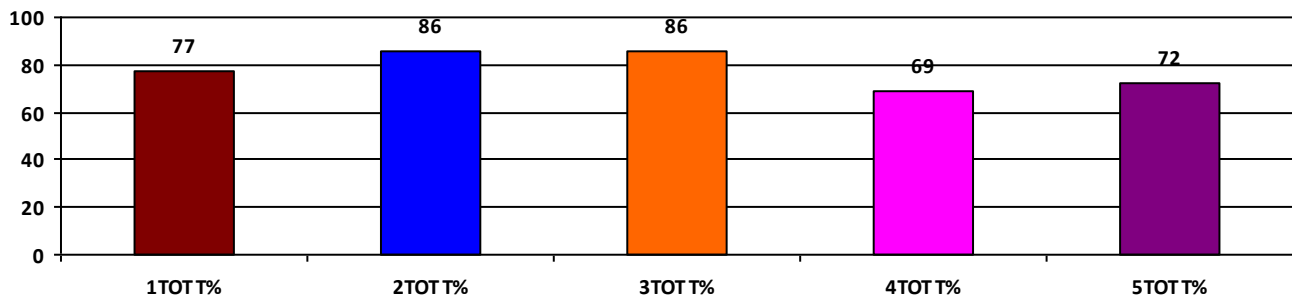
	Boys	Girls	Total
SCHOOL GR.	B	A	A
Diff. to Pre-Test	(-1)	(0)	(0)
DIST. GR.	B	B	B
STATE GR.	B	B	B

CLASSWISE APPEARED

DETAILS	I STD	II STD	III STD	IV STD	V STD
BOYS	12	3	5	1	7
GIRLS	9	4	3	5	4
TOTAL	21	7	8	6	11
Diff. to Pre-Test	(0)	(0)	(0)	(+1)	(+2)

CLASSWISE PERFORMANCE GRADES (% of marks)

DETAILS	I STD	II STD	III STD	IV STD	V STD
%	77	86	86	69	72
SCHOOL GR.	A	A	A	B	B
Diff. to Pre-Test	(0)	(0)	(0)	(-1)	(0)
DIST. GR.	B	B	B	B	B
STATE GR.	A	B	B	B	B



GRADEWISE PERFORMANCE (NO. OF STUDENTS)

ENGLISH	1 Std	2 Std	3 Std	4 Std	5 Std	TAMIL	1 Std	2 Std	3 Std	4 Std	5 Std
GR. A	15	5	8	2	5	GR. A	9	5	7	5	6
GR. B	4	2	0	3	4	GR. B	11	1	1	0	3
GR. C	1	0	0	0	2	GR. C	1	1	0	0	2
GR. D	1	0	0	1	0	GR. D	0	0	0	1	0
GR. E	0	0	0	0	0	GR. E	0	0	0	0	0

DEAL POST TEST 2019-20 - SCHOOL REPORT CARD

KARAIKAL
DIS Z2

34040612411 GPS - MELAIYUR

All Grades represent the following scorings in % *

GRADE A - >75	
GRADE B - 51 TO 75	* School Status Grade
GRADE C - 26 TO 50	represents the total
GRADE D - 10 TO 25	enrollment of the
GRADE E - <10	school (Not %)

Note: The Values given in the brackets denote the difference between the Pre and Post Test Scores.
(For Example: If the Pre-Test Grade is 'C' and the Post-Test Grade is 'A', then the progress is +2)

SCHOOL GRADE - EA

Status Gr. E (0) Performance Gr. A(+1)

OVERALL PERFORMANCE GRADES

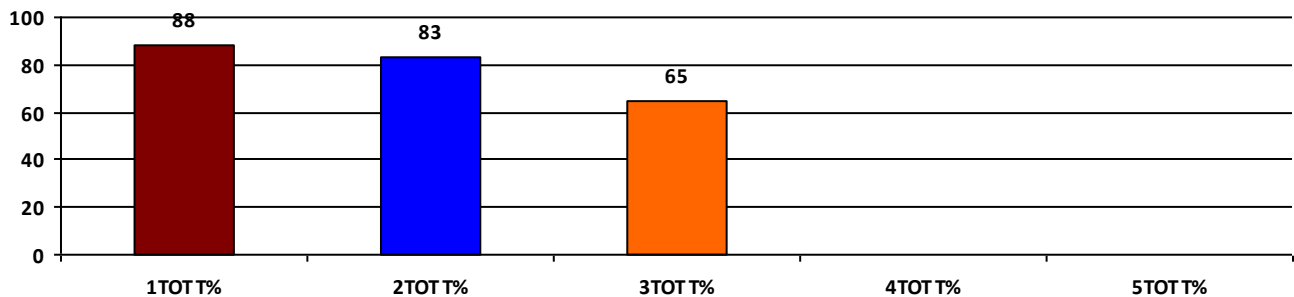
	Boys	Girls	Total
SCHOOL GR.	NA	A	A
Diff. to Pre-Test	(+8)	(+1)	(+1)
DIST. GR.	B	B	B
STATE GR.	B	B	B

CLASSWISE APPEARED

DETAILS	I STD	II STD	III STD	IV STD	V STD
BOYS	0	0	0	0	0
GIRLS	3	2	2	0	0
TOTAL	3	2	2	0	0
Diff. to Pre-Test	(0)	(-1)	(0)	(0)	(0)

CLASSWISE PERFORMANCE GRADES (% of marks)

DETAILS	I STD	II STD	III STD	IV STD	V STD
%	88	83	65	NA	NA
SCHOOL GR.	A	A	B	NA	NA
Diff. to Pre-Test	(+1)	(+1)	(0)	(+8)	(+8)
DIST. GR.	B	B	B	B	B
STATE GR.	A	B	B	B	B



GRADEWISE PERFORMANCE (NO. OF STUDENTS)

ENGLISH	1 Std	2 Std	3 Std	4 Std	5 Std	TAMIL	1 Std	2 Std	3 Std	4 Std	5 Std
GR. A	3	0	0	0	0	GR. A	3	2	2	0	0
GR. B	0	2	2	0	0	GR. B	0	0	0	0	0
GR. C	0	0	0	0	0	GR. C	0	0	0	0	0
GR. D	0	0	0	0	0	GR. D	0	0	0	0	0
GR. E	0	0	0	0	0	GR. E	0	0	0	0	0

DEAL POST TEST 2019-20 - SCHOOL REPORT CARD

KARAIKAL
DIS Z2

34040612412 **GPS - PADUTHARKOLLA**

All Grades represent the following scorings in % *

GRADE A - >75	
GRADE B - 51 TO 75	* School Status Grade
GRADE C - 26 TO 50	represents the total
GRADE D - 10 TO 25	enrollment of the
GRADE E - <10	school (Not %)

Note: The Values given in the brackets denote the difference between the Pre and Post Test Scores.
(For Example: If the Pre-Test Grade is 'C' and the Post-Test Grade is 'A', then the progress is +2)

SCHOOL GRADE - BA

Status Gr. B (0) Performance Gr. A(+1)

OVERALL PERFORMANCE GRADES

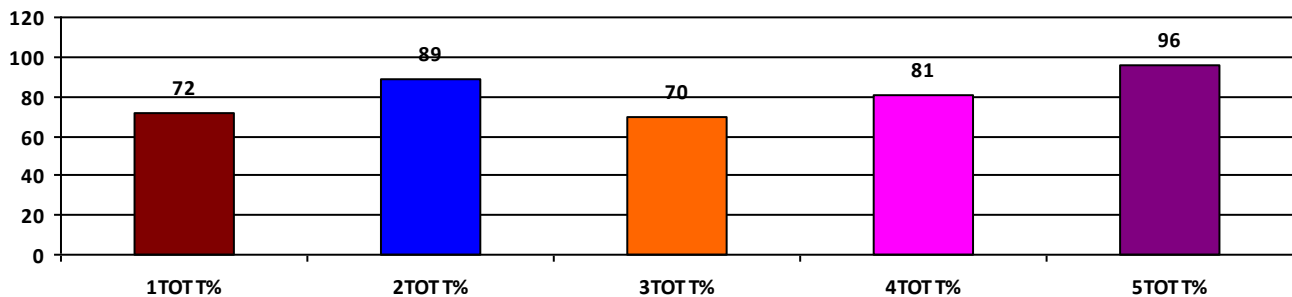
	Boys	Girls	Total
SCHOOL GR.	A	A	A
Diff. to Pre-Test	(+1)	(+1)	(+1)
DIST. GR.	B	B	B
STATE GR.	B	B	B

CLASSWISE APPEARED

DETAILS	I STD	II STD	III STD	IV STD	V STD
BOYS	5	6	5	4	5
GIRLS	9	6	5	6	2
TOTAL	14	12	10	10	7
Diff. to Pre-Test	(0)	(0)	(+1)	(-1)	(0)

CLASSWISE PERFORMANCE GRADES (% of marks)

DETAILS	I STD	II STD	III STD	IV STD	V STD
%	72	89	70	81	96
SCHOOL GR.	B	A	B	A	A
Diff. to Pre-Test	(0)	(+2)	(0)	(+2)	(+1)
DIST. GR.	B	B	B	B	B
STATE GR.	A	B	B	B	B



GRADEWISE PERFORMANCE (NO. OF STUDENTS)

ENGLISH	1 Std	2 Std	3 Std	4 Std	5 Std	TAMIL	1 Std	2 Std	3 Std	4 Std	5 Std
GR. A	6	10	0	6	7	GR. A	9	10	7	8	7
GR. B	3	2	9	2	0	GR. B	4	2	2	2	0
GR. C	3	0	1	2	0	GR. C	1	0	1	0	0
GR. D	2	0	0	0	0	GR. D	0	0	0	0	0
GR. E	0	0	0	0	0	GR. E	0	0	0	0	0

DEAL POST TEST 2019-20 - SCHOOL REPORT CARD

KARAIKAL
DIS Z2

34040612413 GNPS - T.R.PATTINAM

All Grades represent the following scorings in % *

GRADE A - >75	
GRADE B - 51 TO 75	* School Status Grade
GRADE C - 26 TO 50	represents the total
GRADE D - 10 TO 25	enrollment of the
GRADE E - <10	school (Not %)

Note: The Values given in the brackets denote the difference between the Pre and Post Test Scores.
(For Example: If the Pre-Test Grade is 'C' and the Post-Test Grade is 'A', then the progress is +2)

SCHOOL GRADE - AA

Status Gr. A (0) Performance Gr. A(+1)

OVERALL PERFORMANCE GRADES

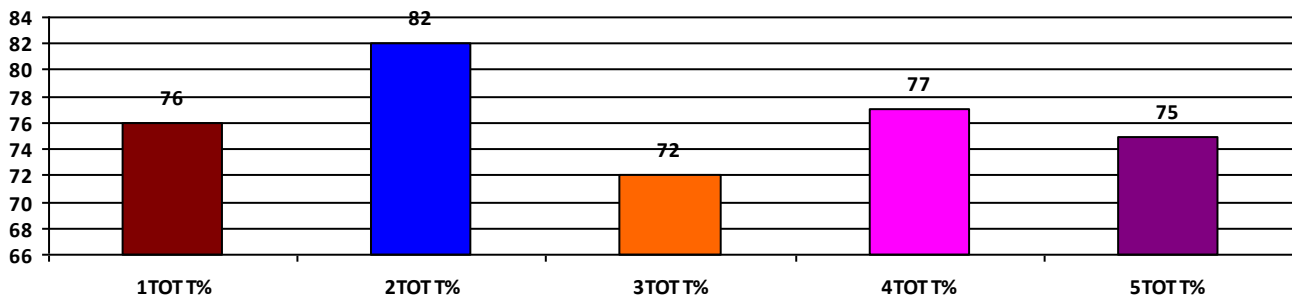
	Boys	Girls	Total
SCHOOL GR.	B	A	A
Diff. to Pre-Test	(+1)	(+1)	(+1)
DIST. GR.	B	B	B
STATE GR.	B	B	B

CLASSWISE APPEARED

DETAILS	I STD	II STD	III STD	IV STD	V STD
BOYS	11	11	11	13	18
GIRLS	7	13	8	10	7
TOTAL	18	24	19	23	25
Diff. to Pre-Test	(0)	(+2)	(0)	(0)	(0)

CLASSWISE PERFORMANCE GRADES (% of marks)

DETAILS	I STD	II STD	III STD	IV STD	V STD
%	76	82	72	77	75
SCHOOL GR.	A	A	B	A	B
Diff. to Pre-Test	(+1)	(+1)	(+1)	(+1)	(+1)
DIST. GR.	B	B	B	B	B
STATE GR.	A	B	B	B	B



GRADEWISE PERFORMANCE (NO. OF STUDENTS)

ENGLISH	1 Std	2 Std	3 Std	4 Std	5 Std	TAMIL	1 Std	2 Std	3 Std	4 Std	5 Std
GR. A	10	20	7	12	19	GR. A	9	15	13	13	11
GR. B	4	4	7	10	4	GR. B	9	6	4	10	12
GR. C	4	0	4	1	2	GR. C	0	3	2	0	1
GR. D	0	0	1	0	0	GR. D	0	0	0	0	1
GR. E	0	0	0	0	0	GR. E	0	0	0	0	0

DEAL POST TEST 2019-20 - SCHOOL REPORT CARD

KARAIKAL
DIS Z2

34040612618 GPS - KEEZHAODUTHURAI

All Grades represent the following scorings in % *

GRADE A - >75	* School Status Grade represents the total enrollment of the school (Not %)
GRADE B - 51 TO 75	
GRADE C - 26 TO 50	
GRADE D - 10 TO 25	
GRADE E - <10	

Note: The Values given in the brackets denote the difference between the Pre and Post Test Scores.
(For Example: If the Pre-Test Grade is 'C' and the Post-Test Grade is 'A', then the progress is +2)

SCHOOL GRADE - DB

Status Gr. D (0) Performance Gr. B (0)

OVERALL PERFORMANCE GRADES

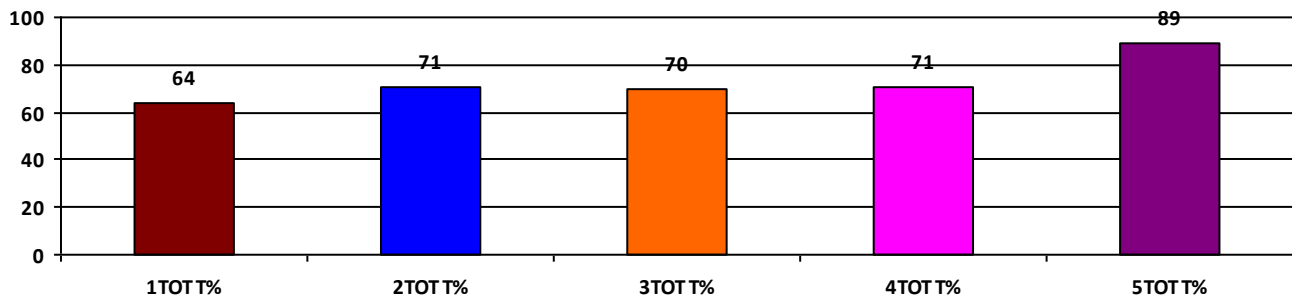
	Boys	Girls	Total
SCHOOL GR.	B	B	B
Diff. to Pre-Test	(0)	(0)	(0)
DIST. GR.	B	B	B
STATE GR.	B	B	B

CLASSWISE APPEARED

DETAILS	I STD	II STD	III STD	IV STD	V STD
BOYS	1	1	3	2	5
GIRLS	4	2	4	1	1
TOTAL	5	3	7	3	6
Diff. to Pre-Test	(0)	(0)	(+1)	(0)	(0)

CLASSWISE PERFORMANCE GRADES (% of marks)

DETAILS	I STD	II STD	III STD	IV STD	V STD
%	64	71	70	71	89
SCHOOL GR.	B	B	B	B	A
Diff. to Pre-Test	(+1)	(+1)	(0)	(0)	(+1)
DIST. GR.	B	B	B	B	B
STATE GR.	A	B	B	B	B



GRADEWISE PERFORMANCE (NO. OF STUDENTS)

ENGLISH	1 Std	2 Std	3 Std	4 Std	5 Std	TAMIL	1 Std	2 Std	3 Std	4 Std	5 Std
GR. A	1	1	4	0	6	GR. A	1	1	4	2	5
GR. B	4	2	1	3	0	GR. B	3	2	3	0	1
GR. C	0	0	1	0	0	GR. C	1	0	0	1	0
GR. D	0	0	1	0	0	GR. D	0	0	0	0	0
GR. E	0	0	0	0	0	GR. E	0	0	0	0	0

DEAL POST TEST 2019-20 - SCHOOL REPORT CARD

KARAIKAL
DIS Z2

34040612801 **GPS - KAKAMOZHI**

All Grades represent the following scorings in % *

GRADE A - >75	
GRADE B - 51 TO 75	* School Status Grade
GRADE C - 26 TO 50	represents the total
GRADE D - 10 TO 25	enrollment of the
GRADE E - <10	school (Not %)

Note: The Values given in the brackets denote the difference between the Pre and Post Test Scores.
(For Example: If the Pre-Test Grade is 'C' and the Post-Test Grade is 'A', then the progress is +2)

SCHOOL GRADE - CC

Status Gr. C (0)	Performance Gr. C (0)
------------------	-----------------------

OVERALL PERFORMANCE GRADES

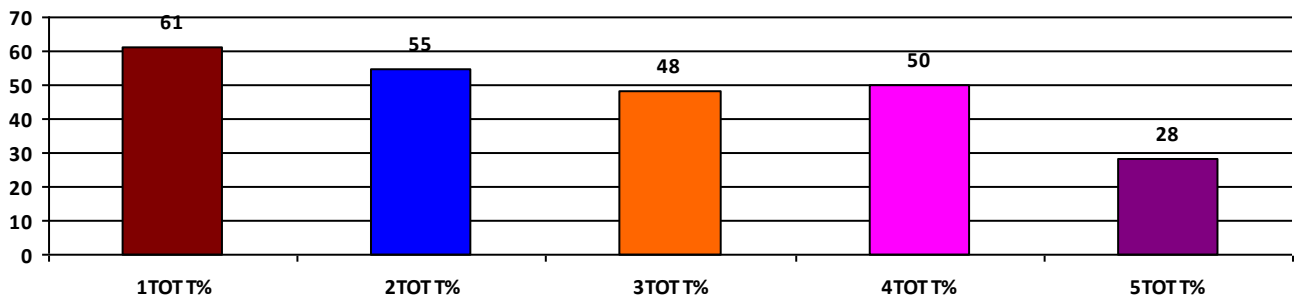
	Boys	Girls	Total
SCHOOL GR.	C	C	C
Diff. to Pre-Test	(0)	(0)	(0)
DIST. GR.	B	B	B
STATE GR.	B	B	B

CLASSWISE APPEARED

DETAILS	I STD	II STD	III STD	IV STD	V STD
BOYS	3	2	2	0	2
GIRLS	4	1	1	6	2
TOTAL	7	3	3	6	4
Diff. to Pre-Test	(0)	(0)	(-2)	(-1)	(-1)

CLASSWISE PERFORMANCE GRADES (% of marks)

DETAILS	I STD	II STD	III STD	IV STD	V STD
%	61	55	48	50	28
SCHOOL GR.	B	B	C	C	C
Diff. to Pre-Test	(+1)	(+1)	(0)	(0)	(+1)
DIST. GR.	B	B	B	B	B
STATE GR.	A	B	B	B	B



GRADEWISE PERFORMANCE (NO. OF STUDENTS)

ENGLISH	1 Std	2 Std	3 Std	4 Std	5 Std	TAMIL	1 Std	2 Std	3 Std	4 Std	5 Std
GR. A	1	0	0	0	0	GR. A	1	1	1	4	0
GR. B	5	1	0	3	0	GR. B	5	1	1	0	1
GR. C	0	2	3	2	1	GR. C	1	1	1	0	1
GR. D	1	0	0	0	3	GR. D	0	0	0	2	2
GR. E	0	0	0	1	0	GR. E	0	0	0	0	0

DEAL POST TEST 2019-20 - SCHOOL REPORT CARD

KARAIKAL
DIS Z2

34040612804 GPS - THOODUPONAMOOLAI

All Grades represent the following scorings in % *

GRADE A - >75	* School Status Grade represents the total enrollment of the school (Not %)
GRADE B - 51 TO 75	
GRADE C - 26 TO 50	
GRADE D - 10 TO 25	
GRADE E - <10	

Note: The Values given in the brackets denote the difference between the Pre and Post Test Scores.
(For Example: If the Pre-Test Grade is 'C' and the Post-Test Grade is 'A', then the progress is +2)

SCHOOL GRADE - CB

Status Gr. C (0) Performance Gr. B(+2)

OVERALL PERFORMANCE GRADES

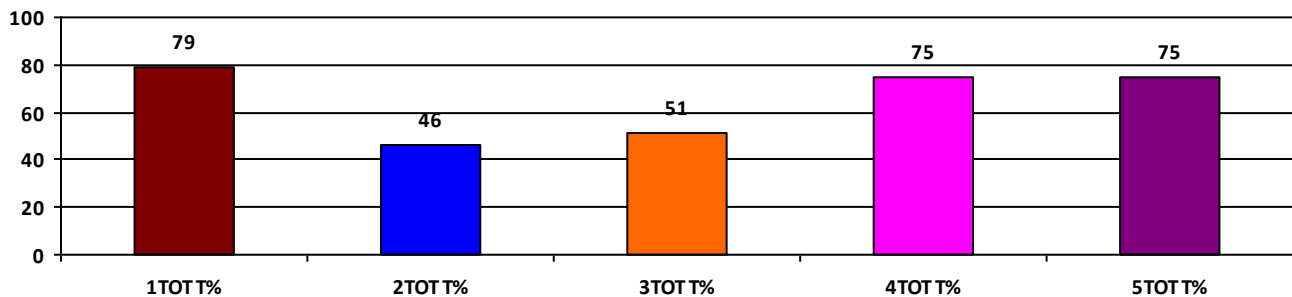
	Boys	Girls	Total
SCHOOL GR.	B	B	B
Diff. to Pre-Test	(+2)	(+2)	(+2)
DIST. GR.	B	B	B
STATE GR.	B	B	B

CLASSWISE APPEARED

DETAILS	I STD	II STD	III STD	IV STD	V STD
BOYS	3	2	10	2	2
GIRLS	3	4	3	4	2
TOTAL	6	6	13	6	4
Diff. to Pre-Test	(+3)	(0)	(+1)	(+1)	(+1)

CLASSWISE PERFORMANCE GRADES (% of marks)

DETAILS	I STD	II STD	III STD	IV STD	V STD
%	79	46	51	75	75
SCHOOL GR.	A	C	B	B	B
Diff. to Pre-Test	(+2)	(+1)	(+2)	(+2)	(+2)
DIST. GR.	B	B	B	B	B
STATE GR.	A	B	B	B	B



GRADEWISE PERFORMANCE (NO. OF STUDENTS)

ENGLISH	1 Std	2 Std	3 Std	4 Std	5 Std	TAMIL	1 Std	2 Std	3 Std	4 Std	5 Std
GR. A	3	0	0	0	1	GR. A	4	1	5	5	3
GR. B	2	2	5	6	2	GR. B	1	1	5	1	1
GR. C	1	4	6	0	1	GR. C	1	3	2	0	0
GR. D	0	0	2	0	0	GR. D	0	1	0	0	0
GR. E	0	0	0	0	0	GR. E	0	0	1	0	0